



**Details of your Electric Charges**

Non-Residential-MGT-LV II - service number 0550 3005 2355 7001 4007 85  
 Electricity you used this period

Meter Number Energy Type	Current Reading	Previous Reading	Multiplier	Total Use	Total for Billing
KZD350866820 On-Peak Use (kWh)	Apr 9 005321 (actual)	Mar 12 005268 (actual)	40	2120	2131
Int-Peak Use (kWh)	005730 (actual)	005666 (actual)	40	2560	2553
Off-Peak Use (kWh)	013984 (actual)	013838 (actual)	40	5840	5859
On-Peak Demand (kW)	0.378 (actual)		40	15.12	15.10
Int-Peak Demand (kW)	0.523 (actual)		40	20.92	20.92
Off-Peak Demand (kW)	0.539 (actual)		40	21.56	21.56
KZD350866843 On-Peak Use (kWh)	Apr 9 025347 (actual)	Mar 12 025187 (actual)	120	19200	19180
Int-Peak Use (kWh)	025026 (actual)	024846 (actual)	120	21600	21543
Off-Peak Use (kWh)	047267 (actual)	046884 (actual)	120	45960	45974
On-Peak Demand (kW)	1.551 (actual)		120	186.12	186.16
Int-Peak Demand (kW)	1.719 (actual)		120	206.28	206.26
Off-Peak Demand (kW)	1.693 (actual)		120	203.16	203.20
<b>Total on-peak Demand-kW</b>				<b>201.24</b>	<b>201.26</b>

<b>Electric Summary</b>	
<b>Balance from your last bill</b>	<b>\$7,368.73</b>
Payment Apr 03	\$7,368.73-
<b>Total Payments</b>	<b>\$7,368.73-</b>
Electric Charges (Non-Residential-MGT-LV II)	\$5,850.39
<b>New electric charges</b>	<b>\$5,850.39</b>
<b>Total amount due by May 3, 2024</b>	<b>\$5,850.39</b>

**Check here to enroll in the Direct Debit plan** Sign and date here \_\_\_\_\_

By signing here, you authorize Pepco to electronically deduct the amount of your monthly bill from your checking account each month. The check you send with this signed authorization will be used to set up Direct Debit. You understand that we will notify you each month of the date and amount of the debit, which will be on or after the due date stated on your monthly bill. You understand that to withdraw this authorization you must call Pepco. You understand that Pepco does not charge for this service, but that your bank may have charges for this service.

**Customer Service Centers**

Washington DC		Maryland	
701 Ninth St NW	(Mon - Fri) 8:30am - 5:15pm	201 West Gude Dr, Rockville	(Mon - Fri) 10:00am - 2:00pm
2300 Martin Luther King Jr Ave SE	(Mon - Fri) 9:00am - 5:00pm	8300 Old Marlboro Pk, Forestville	(Mon, Wed, Fri) 10:00am - 2:00pm

Any inquiry or complaint about this bill should be made prior to the due date, in order to avoid late charges.

Electronic Check Conversion - When you provide a check as payment, you authorize us either to use information from your check to make a one-time electronic fund transfer from your account or to process the payment as a check transaction.

**BETHESDA SNF OPERATOR LLC STERLING CARE**

Account number: 5503 0052 355

Your electric bill for the period  
**March 12, 2024 to April 9, 2024**



Total int-peak Demand-kW	227.20	227.18
Total off-peak Demand-kW	224.72	224.76
Total on-peak usage-kWh	21320	21311
Total int-peak usage-kWh	24160	24096
Total off-peak usage-kWh	51800	51833
Total use-kWh	97280	97240

The "Total for Billing" column represents data from Interval pulses, which is utilized for billing purposes.

Your next meter reading is scheduled for May 10, 2024

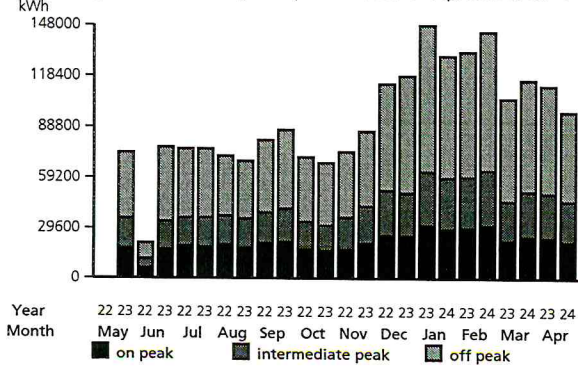
**Delivery Charges:** These charges reflect the cost of bringing electricity to you. Current charges for 29 days, **winter rates in effect.**

<u>Type of charge</u>	<u>How we calculate this charge</u>	<u>Amount(\$)</u>
Distribution Services:		
Customer Charge		46.24
Energy Charge	97240 kWh X \$0.0201750 per kWh	1,961.82
Maximum Demand	227.20 kW X \$3.4080000 per kW	774.30
Franchise Tax (Delivery)	97240 kWh X \$0.0006200 per kWh	60.29
Universal Service Charge		49.13
MD Environmental Surcharge	97240 kWh X \$0.0001500 per kWh	14.59
EmPOWER Maryland Charge	97240 kWh X \$0.0070390 per kWh	684.47
Gross Receipts Tax	at 2.0408%	73.28
Montgomery County Energy Tax	97240 kWh X \$0.0202317 per kWh	1,967.33
Administrative Credit	97240 kWh X \$0.0000000 per kWh	0.00
Sales Tax	at 6%	218.94
<b>Total Electric Delivery Charges</b>		<b>5,850.39</b>

**Total Electric Charges - Non-Residential-MGT-LV II** **5,850.39**

*Your monthly Electricity use in kWh*

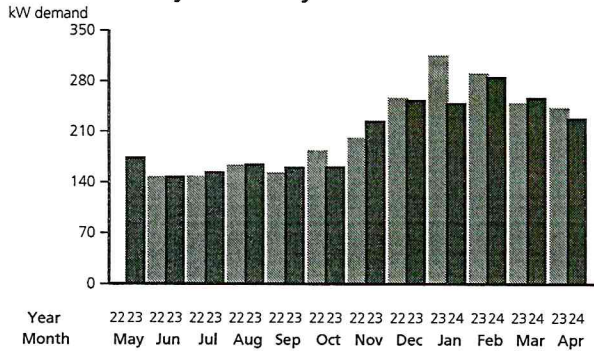
Daily temperature averages: Apr 2023: 52° F Apr 2024: 52° F



**BETHESDA SNF OPERATOR LLC STERLING CARE**  
**Account number: 5503 0052 355**

Your electric bill for the period  
**March 12, 2024 to April 9, 2024**

*Your monthly Electricity use in kW demand*



**SmartestEnergy electric supply charges**

**Service number 0550 3005 2355 7001 4007 85**

Your electricity is supplied by SmartestEnergy US LLC. If you have any questions about your electric supply charges, call SmartestEnergy US LLC at 1-800-448-0995. SmartestEnergy US LLC account number: 0550300523557001400785

Billing period: Mar 12, 2024 to Apr 9, 2024 (29 days)

Type of service: Non-Residential-MGT-LV II

ADJUSTMENT

\$0.28-

CUSTOMER CHARGE 97240KWH@0.089390

\$8,692.28

Sales tax

\$521.52

**Amount(\$)**

**SmartestEnergy electric charges**

**9,213.52**

**SmartestEnergy Electric Supply Summary**

<b>Balance from your last bill</b>	<b>\$10,977.36</b>
Payment Apr 03	\$10,977.36-
<b>Total Payments</b>	<b>\$10,977.36-</b>
Total Current Charges	\$9,213.52
<b>New SmartestEnergy electric supply charges</b>	<b>\$9,213.52</b>
<b>Total amount due by May 3, 2024</b>	<b>\$9,213.52</b>