



An Avangrid company

Account Number	Service Location	Amount Due	Date Due
3001-6094-853	LISA GAUMONT 62 OAK ST	\$188.11	12/02/2024
Invoice Number	BIDDEFORD ME 04005		
702002266908			

Manage your account online: **cmpco.com**
 Customer Service: **800.750.4000**
 Outage reporting line: **800.696.1000**

Your Account Summary

Prior Balance	\$151.21
Payments received through 11/04/2024 - Thank you	-\$151.21
Balance Forward	\$0.00
CMP Delivery	+\$105.65
<i>Non-CMP Supplier Standard Offer</i>	+\$82.46
Please pay by 12/02/2024	\$188.11

Your Messages

The average residential **CMP Delivery** amount includes about \$15 per month in non-CMP costs to support Maine public policy initiatives including net energy billing subsidies, low income assistance and energy efficiency. Learn more about CMP rates and public policy costs at cmpco.com/PublicPolicyCosts.

Asking for help can be hard. With a variety of assistance programs available, we can help if you're having trouble managing your electricity bills. For example, you may be eligible for the Arrearage Management Program or our Electricity Lifeline Program. Learn more at cmpco.com/HelpWithBill or call us at 800.750.4000.

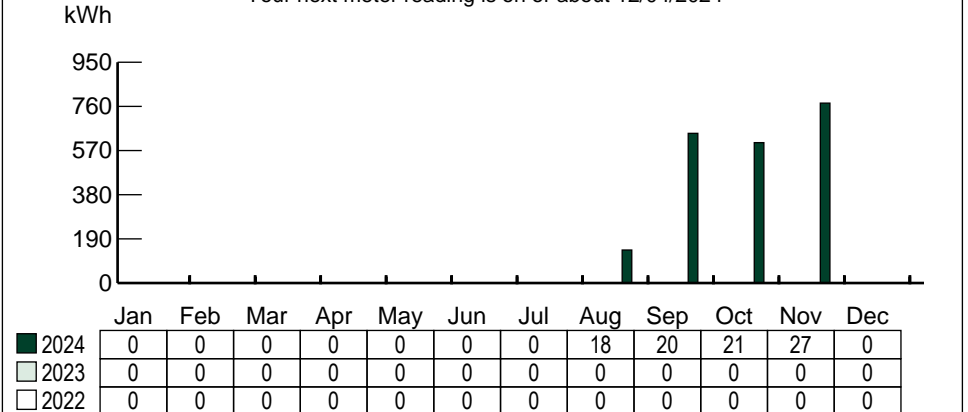
Thank you for choosing AutoPay - our most convenient payment option. Your payments are made automatically, on time every month. There is no need to send payment with this bill.

Stay informed about your electricity use with Usage Alerts. You'll receive weekly updates on your energy use -- powered by your smart meter. You can even customize your alerts so you're notified if you exceed a set amount of electricity use or cost. Visit cmpco.com/Alerts to learn more.

Simplify your account management with our Mobile App. Make payments, enroll in eBill and get outage updates, it's all at your fingertips. Text APP to 267898 and we'll send you a link to download the app.

Your Monthly Usage Summary(kWh)

Your next meter reading is on or about 12/04/2024



Your Average Daily Usage (kWh)

Please return this stub with your payment. Please allow 7 to 10 business days for processing. Do not send cash or coins, and do not return with staples or paper clips. Thank you.

Central Maine Power
 PO Box 847810
 Boston, MA 02284-7810

LISA GAUMONT
 62 OAK ST
 BIDDEFORD ME 04005-3427

Account Number
3001-6094-853
Date Due
12/02/2024
Amount Due
\$188.11
Amount Paid

Please do not write below this line.

101202240030016094853000018811

Your Central Maine Power Delivery Service Account Detail

Prior Balance for Central Maine Power Delivery

\$86.97

Payments received - Thank you

-\$86.97

Balance Forward

\$0.00

Delivery Charges

Delivery Charges: Residential (10/04/2024 - 11/01/2024)

Delivery Service:

774 KWH

Up to 50 KWH

@\$26.60

+\$26.60

724 KWH

@\$.108980

+\$78.91

Maine Sales Tax

+\$0.14

Total Current Delivery Charges

\$105.65

Central Maine Power Account Balance

\$105.65

Your Meter Details

Read Cycle 02

Meter Number	Read Date	Meter Reading	Prior Read Date	Prior Meter Reading	Number of Days	Total kWh
G045292085	11/01/2024	71,782	10/03/2024	71,008	29	774

Customer Information for Your Delivery Service

Delivery rates are approved by the Maine Public Utilities Commission. For bills that cover both electricity supply and CMP delivery, CMP forwards energy-supply payments to the appropriate energy provider. For a schedule of CMP delivery rates, visit cmpco.com or call us at 800.750.4000. To see how your Delivery Charges are impacted by Maine public policy, visit cmpco.com/PublicPolicyCosts.

What's a kilowatt-hour?

Electric power is measured in watts. 1000 watts of power used for 1 hour is a kilowatt-hour (kWh) of energy. Example: a 100 watt bulb lit for 10 hours uses 1 kWh of energy.

Questions?

To ask a question or dispute a bill, you can email customer.service@cmpco.com, or call 800.750.4000, or write to CMP Customer Service, 83 Edison Drive, Augusta, ME 04336.

Sales-Tax Exemption

Maine sales tax does not apply to the first 750 kilowatt-hours (kWh) of residential usage.

Payment Arrangements

If you have trouble paying your bill, a payment plan may help. Call 800.686.4044 for more information.

Late-Payment Charge

Bills are due on receipt. A rate of 0.949% will be applied each month to the unpaid balance after 25 days from the bill postmark.

Maine Public Utilities Commission (MPUC)

The MPUC's Consumer Assistance and Safety Division (CASD) investigates and resolves complaints, educates the public and ensures utilities remain in compliance with State statutes and Commission rules. To contact the CASD, call **800.452.4699** or visit maine.gov/mpuc.

Estimated Bills

When we cannot read your meter, we will estimate your usage for the month. You have the right to read your own meter. Visit cmpco.com for more information, or call 800.750.4000.

Mail Address Changes

Please "X" for mail address changes and fill in your new mailing address information below.

If you are moving or need to stop service, please call a Customer Representative at 1.800.750.4000

Please do not write below this line.

You have chosen to purchase your electricity supply from: [Standard Offer](#).
Rates for electricity supply are not set by CMP yet we are required to bill and collect them on behalf of your Supplier.

Supplier: Standard Offer



LISA GAUMONT
62 OAK ST BIDDEFORD ME 04005

Prior Balance for Standard Offer Supplier		\$64.24
Payments received - Thank you		<u>-\$64.24</u>
Balance Forward		\$0.00
New Supplier Charges		
Residential Service : (10/04/2024 - 11/01/2024)		
Energy Charge	774 KWH @ \$0.106363	+\$82.32
Maine Sales Tax		<u>+\$0.14</u>
Total New Supplier Charges		\$82.46
Standard Offer Supplier Account Balance		<u><u>\$82.46</u></u>

Supplier Information

CMP does not generate or supply electricity. We deliver your electricity. Your Standard Offer electricity is supplied by Constellation Energy (25%) and NextEra Energy Marketing LLC (75%). Standard Offer is the default if you have not chosen an electricity supplier.

CMP is your energy delivery company. Other companies, not regulated by the Maine Public Utilities Commission (MPUC), supply your electricity, which we deliver to you safely and reliably. CMP does not control the supply price though we are required to include and collect the costs in our monthly bills. Now you will see the name of your supplier and their itemized supply charges in BLUE on this page.

Competitive bidding for the right to supply Standard Offer electricity is supervised by the MPUC. The price per kWh for your default Standard Offer electricity supply is \$0.106363.

You may learn more about energy supply and suppliers, and possibly find a better supply price, by visiting the Office of the Public Advocate (OPA) at maine.gov/SupplyRates, calling the OPA at 207.624.3687, or by visiting the MPUC at maine.gov/mpuc.

Visit us at cmpco.com/UnderstandYourUsage to see ways to manage and potentially reduce your usage.