



An Avangrid company

Account Number	Service Location	Amount Due	Date Due
3501-1135-007	RAVE BROTHERS LLC 443 B WESTERN AVE SOUTH PORTLAND ME 04106	\$426.28	12/31/2024
Invoice Number	719002159968		

Manage your account online: [cmpco.com](http://cmpco.com)  
 Customer Service: 800.565.3181  
 Outage reporting line: 800.696.1000

**Your Account Summary**

Prior Balance	\$355.90
Payments received through 12/04/2024 - Thank you	-\$355.90
<b>Balance Forward</b>	<b>\$0.00</b>
<b>CMP Delivery</b>	<b>+\$217.67</b>
<i>Non-CMP Supplier Standard Offer</i>	<i>+\$208.61</i>
<b>Please pay by 12/31/2024</b>	<b>\$426.28</b>

**Your Messages**

The average residential **CMP Delivery** amount includes about \$15 per month in non-CMP costs to support Maine public policy initiatives including net energy billing subsidies, low income assistance and energy efficiency. Learn more about CMP rates and public policy costs at [cmpco.com/PublicPolicyCosts](http://cmpco.com/PublicPolicyCosts).

Asking for help can be hard. With a variety of assistance programs available, we can help if you're having trouble managing your electricity bills. For example, you may be eligible for the Arrearage Management Program or our Electricity Lifeline Program. Learn more at [cmpco.com/HelpWithBill](http://cmpco.com/HelpWithBill) or call us at 800.750.4000.

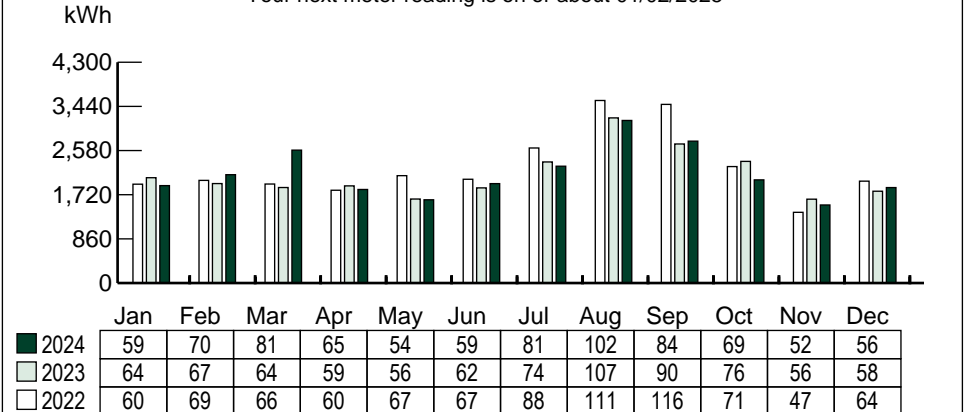
Thank you for choosing AutoPay - our most convenient payment option. Your payments are made automatically, on time every month. There is no need to send payment with this bill.

Simplify your account management with our Mobile App. Make payments, enroll in eBill and get outage updates, it's all at your fingertips. Text APP to 267898 and we'll send you a link to download the app.

As part of our commitment to deliver safe, reliable service to all of our customers, we are investing in our delivery system to meet growing demand, increase reliability, and accommodate growth and economic development in our service areas.

**Your Monthly Usage Summary(kWh)**

Your next meter reading is on or about 01/02/2025



**Your Average Daily Usage (kWh)**

Please return this stub with your payment. Please allow 7 to 10 business days for processing. Do not send cash or coins, and do not return with staples or paper clips. Thank you.

Central Maine Power  
 PO Box 847810  
 Boston, MA 02284-7810

RAVE BROTHERS LLC  
 RAVE X  
 443 WESTERN AVE # B  
 S PORTLAND ME 04106-1705

<b>Account Number</b>
3501-1135-007
<b>Date Due</b>
12/31/2024
<b>Amount Due</b>
\$426.28
<b>Amount Paid</b>

Please do not write below this line.

101231240035011135007000042628

### Your Central Maine Power Delivery Service Account Detail

#### Prior Balance for Central Maine Power Delivery

\$185.34

Payments received - Thank you

-\$185.34

#### Balance Forward

\$0.00

#### Delivery Charges

Delivery Charges: SGS Secondary 3 Phase ( 11/01/2024 - 12/03/2024 )

Service Charge - Three Phase

@\$49.32

+\$49.32

Delivery Service:

1,859 KWH

@\$0.084454

+\$157.00

Maine Sales Tax

+\$11.35

#### Total Current Delivery Charges

\$217.67

#### Central Maine Power Account Balance

\$217.67

### Your Meter Details

Read Cycle 01

Meter Number	Read Date	Meter Reading	Prior Read Date	Prior Meter Reading	Number of Days	Total kWh
L149099872	12/03/2024	57,116	10/31/2024	55,257	33	1,859

### Customer Information for Your Delivery Service

Delivery rates are approved by the Maine Public Utilities Commission. For bills that cover both electricity supply and CMP delivery, CMP forwards energy-supply payments to the appropriate energy provider. For a schedule of CMP delivery rates, visit [cmpco.com](http://cmpco.com) or call us at 800.565.3181. To see how your Delivery Charges are impacted by Maine public policy, visit [cmpco.com/PublicPolicyCosts](http://cmpco.com/PublicPolicyCosts).

#### What's a kilowatt-hour?

Electric power is measured in watts. 1000 watts of power used for 1 hour is a kilowatt-hour (kWh) of energy. Example: a 100 watt bulb lit for 10 hours uses 1 kWh of energy.

#### Questions?

To ask a question or dispute a bill, you can email [customer.service@cmpco.com](mailto:customer.service@cmpco.com), or call 800.565.3181, or write to CMP Customer Service, 83 Edison Drive, Augusta, ME 04336.

#### Sales-Tax Exemption

Maine sales tax does not apply to the first 750 kilowatt-hours (kWh) of residential usage.

#### Payment Arrangements

If you have trouble paying your bill, a payment plan may help. Call 800.686.4044 for more information.

#### Late-Payment Charge

Bills are due on receipt. A rate of 0.949% will be applied each month to the unpaid balance after 25 days from the bill postmark.

#### Maine Public Utilities Commission (MPUC)

The MPUC's Consumer Assistance and Safety Division (CASD) investigates and resolves complaints, educates the public and ensures utilities remain in compliance with State statutes and Commission rules. To contact the CASD, call **800.452.4699** or visit [maine.gov/mpuc](http://maine.gov/mpuc).

#### Estimated Bills

When we cannot read your meter, we will estimate your usage for the month. You have the right to read your own meter. Visit [cmpco.com](http://cmpco.com) for more information, or call 800.565.3181.

### Mail Address Changes

Please "X" for mail address changes and fill in your new mailing address information below.

\_\_\_\_\_

\_\_\_\_\_

\_\_\_\_\_

\_\_\_\_\_

If you are moving or need to stop service, please call a Customer Representative at 1.800.750.4000

Please do not write below this line.

You have chosen to purchase your electricity supply from: [Standard Offer](#). Rates for electricity supply are not set by CMP yet we are required to bill and collect them on behalf of your Supplier.

*Supplier: Standard Offer*



RAVE BROTHERS LLC  
443 B WESTERN AVE SOUTH PORTLAND ME 04106

<b>Prior Balance for Standard Offer Supplier</b>		<b>\$170.56</b>
Payments received - Thank you		-\$170.56
<b>Balance Forward</b>		<b>\$0.00</b>
<b>New Supplier Charges</b>		
Small Non-Residential Service : ( 11/01/2024 - 12/03/2024 )		
Energy Charge	1,859 KWH	@\$0.106363
Maine Sales Tax		+\$197.73
<b>Total New Supplier Charges</b>		<b>\$208.61</b>
<b>Standard Offer Supplier Account Balance</b>		<b>\$208.61</b>

***Supplier Information***

CMP does not generate or supply electricity. We deliver your electricity. Your Standard Offer electricity is supplied by Constellation Energy (25%) and NextEra Energy Marketing LLC (75%). Standard Offer is the default if you have not chosen an electricity supplier.

CMP is your energy delivery company. Other companies, not regulated by the Maine Public Utilities Commission (MPUC), supply your electricity, which we deliver to you safely and reliably. CMP does not control the supply price though we are required to include and collect the costs in our monthly bills. Now you will see the name of your supplier and their itemized supply charges in BLUE on this page.

Competitive bidding for the right to supply Standard Offer electricity is supervised by the MPUC. The price per kWh for your default Standard Offer electricity supply is \$0.106363.

You may learn more about energy supply and suppliers, and possibly find a better supply price, by visiting the Office of the Public Advocate (OPA) at [maine.gov/SupplyRates](http://maine.gov/SupplyRates), calling the OPA at 207.624.3687, or by visiting the MPUC at [maine.gov/mpuc](http://maine.gov/mpuc).

Visit us at [cmpco.com/UnderstandYourUsage](http://cmpco.com/UnderstandYourUsage) to see ways to manage and potentially reduce your usage.