



SERVICE ADDRESS	ACCOUNT NUMBER	DUE DATE	
LANCER DAVISON 122 FOX ST DENVER, CO 80223-1418	53-2831521-3	02/12/2025	
	STATEMENT NUMBER	STATEMENT DATE	AMOUNT DUE
	911940063	01/23/2025	\$160.74

YOUR MONTHLY ELECTRICITY USAGE



DAILY AVERAGES	Last Year	This Year
Temperature	31° F	33° F
Electricity kWh	25.5	22.4
Electricity Cost	\$4.13	\$2.00

YOUR MONTHLY NATURAL GAS USAGE



DAILY AVERAGES	Last Year	This Year
Temperature	31° F	32° F
Gas Therms	2.8	2.4
Gas Cost	\$2.93	\$2.65

SUMMARY OF CURRENT CHARGES (detailed charges begin on page 2)

Electricity Service	12/18/24 - 01/21/25	763 kWh	\$127.67
Natural Gas Service	12/19/24 - 01/23/25	84 therms	\$92.81
Other Recurring Charges			-\$59.74 CR
Current Charges			\$160.74

ACCOUNT BALANCE (Balance de su cuenta)

Previous Balance	As of 12/18	\$109.04
Payment Received	Credit Card 01/09	-\$109.04 CR
Balance Forward		\$0.00
Current Charges		\$160.74
Amount Due (Cantidad a pagar)		\$160.74

INFORMATION ABOUT YOUR BILL

Now that you have a new electric meter, your monthly bill will look different than it has in the past and will show your electric use during different segments of the day. You can also sign up at xcelenergy.com/MyAccount to see your billing history and other helpful information.

Thank you for your payment.

QUESTIONS ABOUT YOUR BILL?

See our website: xcelenergy.com

Call Mon - Fri 7 a.m.-7 p.m. or Sat 9 a.m.-5 p.m.

Please Call: 1-800-895-4999

Español: 1-800-687-8778

Or write us at: XCEL ENERGY
PO BOX 8
EAU CLAIRE WI 54702-0008



RETURN BOTTOM PORTION WITH PAYMENT ONLY • PLEASE DO NOT INCLUDE OTHER REQUESTS • SEE BACK OF BILL FOR CONTACT METHODS



Please help our neighbors in need by donating to Energy Outreach Colorado. Please mark your donation amount on the back of this payment stub and CHECK THE RED BOX under your address below.

----- manifest line -----



LANCER DAVISON
122 FOX ST
DENVER CO 80223-1418

ACCOUNT NUMBER	DUE DATE	AMOUNT DUE	AMOUNT ENCLOSED
53-2831521-3	02/12/2025	\$160.74	

Please see the back of this bill for more information regarding the late payment charge.
Make your check payable to XCEL ENERGY

FEBRUARY						
S	M	T	W	T	F	S
						1
2	3	4	5	6	7	8
9	10	11	12	13	14	15
16	17	18	19	20	21	22
23	24	25	26	27	28	



XCEL ENERGY
P.O. BOX 660553
DALLAS TX 75266-0553



31 53021225 28315213 0000001607400000016074

065104 1/3

11





SERVICE ADDRESS	ACCOUNT NUMBER	DUE DATE	
LANCER DAVISON 122 FOX ST DENVER, CO 80223-1418	53-2831521-3	02/12/2025	
	STATEMENT NUMBER	STATEMENT DATE	AMOUNT DUE
	911940063	01/23/2025	\$160.74

SERVICE ADDRESS: 122 FOX ST DENVER, CO 80223-1418
NEXT READ DATE: 02/25/25

ELECTRICITY SERVICE DETAILS

PREMISES NUMBER: 301301130
INVOICE NUMBER: 1157440596

METER READING INFORMATION

METER 352003618			
Read Dates: 12/18/24 - 01/21/25 (34 Days)			
DESCRIPTION	CURRENT READING	PREVIOUS READING	USAGE
Mid Pk Energy	32 Actual	0 Actual	32 kWh
On-Peak Energy	92 Actual	0 Actual	92 kWh
Off-Peak Energy	639 Actual	0 Actual	639 kWh
Total Energy	763 Actual	0 Actual	763 kWh

ELECTRICITY CHARGES

RATE: RETOU ResEnergy TOU

DESCRIPTION	USAGE UNITS	RATE	CHARGE
Service & Facility			\$7.10
RETOU On-Peak	92 kWh	\$0.131710	\$12.12
RETOU Mid Pk/Shoulder	32 kWh	\$0.104600	\$3.35
RETOU Off-Peak	639 kWh	\$0.077490	\$49.52
RenewableConnectFlexAdj	763 kWh	\$0.010000	\$7.63
Trans Cost Adj	40.13	8.30%	\$3.33
Trans Cost Adj	24.84	5.08%	\$1.27
ECA Q1	40.13	31.45%	\$12.62
ECA Q4	24.84	30.83%	\$7.66
Demand Side Mgmt	24.84	10.97%	\$2.73
Demand Side Mgmt	40.13	10.14%	\$4.07
PurchCapCostAdj	40.13	3.62%	\$1.45
PurchCapCostAdj	24.84	5.80%	\$1.44
Trans Elec Plan	40.13	1.29%	\$0.52
Trans Elec Plan	24.84	0.75%	\$0.18
Renew. Energy Std Adj			\$1.15
Colo Energy Plan Adj			\$1.15
Energy Assistance Chg			\$0.81

Subtotal

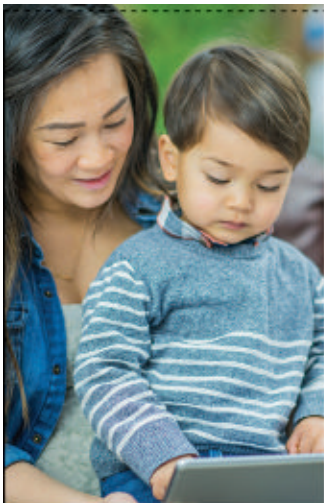
\$118.10



SAFETY IS A POWERFUL RESPONSIBILITY.

When millions of people rely on you for their energy, you hold a lot of power in your hands, which includes the power to protect. That's why we trust a team of nearly 3,000 utility professionals to deliver energy right to your door, safely.

For ways YOU can stay safe, visit xcelenergy.com/Safety.



TOGETHER WE POWER STABILITY.

Energy Outreach Colorado is a nonprofit partnering with Xcel Energy to provide energy bill payment assistance and energy-efficiency upgrades for affordable housing and nonprofit facilities. We need your help today! There are three ways to contribute:



1. Visit the Energy Outreach Colorado website at www.energyoutreach.org to make a one-time donation.

2. CHECK THE RED BOX on the front-left side of this payment stub AND select a tax-deductible contribution below.

MONTHLY DONATION:

\$20 _____ \$10 _____ \$5 _____ Other _____

3. Make a one-time, tax-deductible contribution of \$ _____

Enclose this form with your Xcel Energy payment. Or, mail to:
ATTN PAR Dept., PO BOX 8, EAU CLAIRE, WI 54702-0008
(Please make your check payable to Energy Outreach Colorado.)

Customers that choose to donate will have account information securely shared with Energy Outreach Colorado for tax purposes only.



SERVICE ADDRESS	ACCOUNT NUMBER	DUE DATE	
LANCER DAVISON 122 FOX ST DENVER, CO 80223-1418	53-2831521-3	02/12/2025	
	STATEMENT NUMBER	STATEMENT DATE	AMOUNT DUE
	911940063	01/23/2025	\$160.74



STOP WINTER AIR IN ITS TRACKS

Cold air leaks can inflate your heating and energy costs. Insulate doors, windows, and anywhere air can escape.

Get more tips at xcelenergy.com/EnergySavingTips.

ELECTRICITY CHARGES

RATE: RETOU ResEnergy TOU

DESCRIPTION	USAGE UNITS	RATE	CHARGE
Franchise Fee		3.00%	\$3.50
Sales Tax			\$6.07
Total			\$127.67

SERVICE ADDRESS: 122 FOX ST DENVER, CO 80223-1418
NEXT READ DATE: 02/25/25

NATURAL GAS SERVICE DETAILS

PREMISES NUMBER: 301301130
INVOICE NUMBER: 0550452920

METER READING INFORMATION			
METER 20210034		Read Dates: 12/19/24 - 01/23/25 (35 Days)	
DESCRIPTION	CURRENT READING	PREVIOUS READING	USAGE
Total Energy	7593 Actual	7497 Actual	96 ccf

NATURAL GAS ADJUSTMENTS

DESCRIPTION	VALUE UNITS	CONVERSION	VALUE UNITS
Therm Multiplier	96 ccf	x 0.870317	84 therms

NATURAL GAS CHARGES

RATE: RG Residential

DESCRIPTION	USAGE UNITS	RATE	CHARGE
Service & Facility			\$11.00
Usage Charge	84 therms	\$0.317170	\$26.64
Interstate Pipeline	19.27 therms	\$0.057500	\$1.11
Interstate Pipeline	64.73 therms	\$0.057400	\$3.72
Natural Gas Q4	19.27 therms	\$0.304900	\$5.88
Demand Side Mgmt			\$3.65
Natural Gas Q1	64.73 therms	\$0.317800	\$20.57
EGCRR	84 therms	\$0.072210	\$6.07
GRSA			\$6.37
Energy Assistance Chg			\$0.81
Subtotal			\$85.82
Franchise Fee		3.00%	\$2.55
Sales Tax			\$4.44
Total			\$92.81

OTHER RECURRING CHARGES DETAILS

DESCRIPTION	CHARGE
Solar* Rewards Community Solar Production Credit	
Solar Production Period	December 2024
SRC075013 Production Credit	699.82 kWh x -0.085360
Total	- \$59.74 CR

065104 2/3



01/23/2025

53-2831521-3

CONVENIENT WAYS TO PAY YOUR BILL

Standard Payment Options (no fees apply):

- **My Account:** View and pay your bill using our mobile app, see your energy use and access your account information.
- **Auto Pay:** Automatically pay your bill directly from your bank account.
- **Pay Online:** View and pay your bill online using MyCheckFree.
- **Pay by Phone:** Make your payment from your checking or savings account with a phone call to **800-895-4999**.

- **Pay by Mail:** Return the enclosed pre-addressed envelope to **Xcel Energy, PO Box 660553, Dallas, TX 75266-0553**. Include the attached bill stub for faster processing along with your payment. Apply proper postage.

Electronic Check Conversion: When you provide a check as payment, you authorize us either to use information from your check to make a one-time electronic fund transfer from your account or to process the payment as a check transaction.

Other Payment Options

Third-Party processing fees will apply. Xcel Energy does not collect or benefit from these fees:

- **Credit/Debit Card Payment:** To pay with your card, use **MyAccount** or **eBill** or call **833-660-1365**.
- **Pay Stations:** Visit **xcelenergy.com** to find an in-person location near you.

GLOSSARY

Colorado Energy Plan Adjustment

(Colo Energy Plan Adj): funds voluntary early retirement for Xcel Energy's coal-fired power plants as part of our plan to cut carbon emissions by 2030 and provide net-zero energy by 2050.

Demand Charge: recovers costs to produce and deliver power to you, including the costs of poles and wires, transmission and distribution facilities in the power grid.

Demand Peak Day Quantity (Demand PDQ): this charge is for large commercial and industrial customers only. It's a measurement of their highest daily use of electricity during a monthly billing cycle.

Demand-Side Management Cost Adjustment (Demand Side Mgmt): recovers costs of energy efficiency and conservation programs that encourage customers to reduce their energy use. If you receive electricity and natural gas from us you will see two charges.

Energy Assistance Charge: Required by House Bill 21-1105, we collect and remit this monthly charge to Energy Outreach Colorado for bill assistance for income-qualified customers. If you receive electricity and natural gas from us you will see two charges. If you're struggling to pay your utility bills, you might qualify for exemption from a monthly charge related to energy assistance and be eligible for utility bill payment assistance. Please call 1-866-HEAT-HELP to see if you qualify. You may request to opt out of this charge by calling 800-895-4999.

Si tiene dificultades para pagar sus facturas de energía, es posible que reúna los requisitos para recibir asistencia para pagar sus facturas y que sea elegible para la exención del cargo por asistencia energética. Llame al 1-866-HEAT-HELP (1-866-432-8435) para ver si califica para recibir asistencia.

Electric Commodity Adjustment (ECA): recovers the cost of fuel used to generate the electricity you use. We pass on the wholesale cost to customers without a markup. Costs are adjusted on a quarterly basis to reflect market conditions.

Energy Charge: the variable costs of producing energy not collected through quarterly commodity adjustments.

Extraordinary Gas Cost Recovery Rider (EGCRR): recovers the market cost of natural gas delivered to Colorado customers during Winter Storm Uri (February 2021). It will appear on bills for 30 months from August 2022 to January 2025. If you also receive natural gas service from us, you will see two EGCRR charges on your bill.

Franchise Fee: this surcharge pays cities and counties for the right to use public streets to provide utility services. We collect the surcharges and pass them to your city and county.

Gas Cost Adjustment (Gas Cost Adj): recovers the cost of natural gas purchased and delivered to you, including natural gas fuel, upstream transportation and storage services. We pass on the wholesale cost to customers without a markup. Costs are adjusted on a quarterly basis to reflect market conditions.

General Rates: your base rate charge, which includes the Service and Facility Charge, metering charges, a Demand Charge (if applicable), plus either an Energy Charge for electric service or the Usage Charge for gas service, as applicable.

General Rate Schedule Adjustments (GRSA): a percentage amount of your bill calculated for base rate charges, including the Service and Facility Charge, the Energy or Usage Charge and the Demand or Capacity Charge. The adjustment can be positive or negative and is applied to your electric and/or natural gas bill.

GRSA-Energy (GRSA-E): explained above, applied as dollars per kilowatt hour. For electric bills, this is applied to residential and small commercial customers.

GRSA-Pipeline System Integrity Adjustment (GRSA-P): recovers the cost of natural gas pipeline safety programs and initiatives.

Interstate Pipeline: reflects Xcel Energy's payments to interstate pipelines and storage facility operators to deliver natural gas into Xcel Energy's gas system. The Federal Energy Regulatory Commission regulates these upstream services and the rates charged to Xcel Energy.

Kilowatt Hour (kWh): Measures the amount of electricity you use.

Late Payment Charge: we assess a late payment charge on any unpaid balance exceeding \$50.00. For residential customers, a late payment charge of 1% per month is applied. For commercial customers, a 1.5% late payment charge will be assessed.

Load Meter Charge: a flat monthly charge for those with customer-owned generation in parallel with Xcel Energy's system. This fee is for the cost of the meter needed for these accounts.

Natural Gas: reflects our cost to purchase natural gas fuel at market prices as approved by the Colorado Public Utilities Commission.

Production Meter Charge: a flat monthly charge for customers who have on-site power generation, like rooftop solar, and are connected to Xcel Energy's system. This fee is for the cost of the meter needed for these accounts.

Purchased Capacity Cost Adjustment (Purchased Cap Cost Adj): the cost to purchase electric generation from other suppliers.

Renewable Energy Standard Adjustment (Renew Energy Std Adj): a base rate charge which represents 1% of an electric bill and funds renewable energy programs as required by Colorado law under which utilities must generate or purchase increasing portions of their electricity from sun, wind or biomass.

Revenue Decoupling Adjustment: supports a program designed to encourage conservation without penalizing the energy provider for the reduction of electricity use. Adjusted quarterly, customers will either see a bill credit or a surcharge not to exceed 3% of your overall bill.

Service & Facility Charge: a flat monthly charge for the meter on your home, having the meter read, billing support and customer service needs.

Time-of-Use Rates: electricity use charges for customers on our time-differentiated pricing plan. Electricity pricing varies depending on when you use it. The On-Peak period is 3-7 p.m., weekdays except holidays; Mid-Peak is 1-3 p.m., weekdays except holidays; Off-Peak is all other hours.

Therm: Measures your natural gas use. One therm is equal to 100 cubic feet of natural gas. A dekatherm is 10 therms.

Therm Multiplier: natural gas usage is measured in therms. This is the conversion from the volume of natural gas (cubic feet) to energy use (therms).

Transmission Cost Adjustment (Trans Cost Adj): recovers transmission investments for infrastructure to carry electricity from a power plant to your home and business that results in a net increase in transmission capacity or are part of an approved Wildfire Mitigation Plan.

Transportation Electrification Plan Adjustment (Trans Elec Plan): funds programs to and to help customers unlock the benefits of electric transportation.

Usage Charge: this charge covers the costs for providing natural gas service, including moving natural gas through pipelines and storage to your home or business, that are not recovered through other charges.

RESOURCES TO BETTER UNDERSTAND YOUR BILL

Find more information online about ways to pay and manage your bill, how to read your bill, energy assistance programs and more. Bills are even easier online. Go paperless. Download our Mobile App to manage your bill with ease and when you're on the go. Available now in the Apple Store and in Google Play.

Billing summary note: depending on the date your bill was calculated, you may see a line item included twice, showing different quarterly adjustments.





065104 3/3



2024 COLORADO DISTRIBUTION SYSTEM PLAN PROPOSAL

Xcel Energy is seeing unprecedented electricity demand driven by smarter homes and businesses, transportation and advanced technologies — and this demand will only continue to increase. On Dec. 16, 2024, we submitted a proposal to the Colorado Public Utilities Commission to expand, strengthen and modernize the electric grid so we meet the evolving needs of our customers. Our Distribution System Plan will allow us to continue providing safe, reliable service, energy products and programs to our customers — while shoring up the local power grid to meet Colorado’s ambitious electrification goals and deliver cleaner energy.

CUSTOMER BENEFITS AND VALUE

- Boosts the **safety** and **security** of the electric grid.
- Enables the **clean energy transition** and supports Colorado state law and policy requirements for **emission reductions** and **electrification**.
- Expands and unlocks choices our customers and communities want, including **beneficial electrification**, **distributed energy resources**, **battery storage** and increased **renewable power** technologies.
- Spurs **innovation** in the **new energy economy**.
- Meets energy demand from new business and community **growth**.
- Ensures the grid is **resilient** in the face of climate change, severe weather and natural disasters.
- Delivers grid **flexibility** to integrate intermittent resources, output from renewables and distributed energy resources, like rooftop solar, demand response and energy storage.

- Optimizes operation of the power system, **reduces outages** and improves customer service.
- Enhances **reliability** by increasing vegetation clearances around electric infrastructure.
- Supports cities by investing in **undergrounding** and **community energy resiliency projects**.

PROPOSED INVESTMENTS

Our Distribution System Plan represents approximately \$5 billion in distribution system investments over five years. If our plan is approved as filed by the Commission, we anticipate it will increase the average Colorado residential electric bill by 9.01%, or about \$8.71 per month by 2029. The average small business customer will see an increase of 8.45%, or about \$10.24 per month by 2029.

Proactive distribution investments are critical to integrating new technology onto the grid, meeting customer expectations, supporting state policy objectives and achieving the goals included in regulatory filings such as our Clean Heat, Transportation Electrification, Wildfire Mitigation and Demand Side Management/Beneficial Electrification plans.

LEARN MORE

This proposal is subject to approval by the Commission, which will include opportunities for public input and participation. Details about this request, including the legal notice, are available on the back of this page and at [xcelenergy.com/Company/Rates_and_Regulations/Filings](https://www.xcelenergy.com/Company/Rates_and_Regulations/Filings)

Puede encontrar esta noticia en español en nuestro sitio web:
[xcelenergy.com/Company/Rates_and_Regulations/Filings](https://www.xcelenergy.com/Company/Rates_and_Regulations/Filings)

01/23/2025

53-28315213

