



**Details of your Electric Charges**

Residential Heating - service number 0550 3640 9625 7002 3027 56  
 Electricity you used this period

<u>Meter Number</u>	<u>Energy Type</u>	<u>End Date</u>	<u>Start Date</u>	<u>Number Of Days</u>	<u>Total Use</u>
1ND396302178	Use (kWh)	Nov 25	Oct 26	31	725
		<u>Reading</u>	<u>Reading</u>	<u>Multiplier</u>	
		018525	017799	1	

Your meter records electric energy use in hourly intervals. Your bill is the total of all hourly intervals recorded during your billing period.  
 End and start date kWh meter readings are provided for informational purposes only.  
 Please visit My Account at delmarva.com to view your energy use data.

**Your next bill period is scheduled to end on December 26, 2024**

**Delivery Charges:** These charges reflect the cost of bringing electricity to you.  
 Current charges for 31 days, **winter rates in effect.**

<u>Type of charge</u>	<u>How we calculate this charge</u>	<u>Amount(\$)</u>
Customer Charge		13.50
Distribution Charge	First 500 kWh X \$0.0436060 per kWh	21.80
Distribution Charge	Last 225 kWh X \$0.0436060 per kWh	9.81
Low Income Charge	725 kWh X \$0.0000950 per kWh	0.07
Green Energy Fund	725 kWh X \$0.0003560 per kWh	0.26
Renewable Compliance Charge:		
Wind & Solar	725 kWh X \$0.0063670 per kWh	4.62
Qualified Fuel Cells	725 kWh X \$0.0045900 per kWh	3.33
Distribution System Improvement Charge	at 2.84%	1.28
Energy Efficiency Surcharge	725 kWh X \$0.0004050 per kWh	0.29
<b>Total Electric Delivery Charges</b>		<b>54.96</b>

**Check here to enroll in the Direct Debit plan**      Sign and date here \_\_\_\_\_

By signing here, you authorize Delmarva Power to electronically deduct the amount of your monthly bill from your checking account each month. The check you send with this signed authorization will be used to set up Direct Debit. You understand that we will notify you each month of the date and amount of the debit, which will be on or after the due date stated on your monthly bill. You understand that to withdraw this authorization you must call Delmarva Power. You understand that Delmarva Power does not charge for this service, but that your bank may have charges for this service.

Electronic Check Conversion

When you provide a check as payment, you authorize us either to use information from your check to make a one-time electronic fund transfer from your account or to process the payment as a check transaction.

**KEANU KOMAR**  
**Account number: 5503 6409 625**

Your electric bill for the period  
**October 26, 2024 to November 25, 2024**

Both the "Wind & Solar" and "Qualified Fuel Cell" portions of the Renewable Compliance Charge above provide compliance required by Delaware's Renewable Energy Portfolio Standards Act. The Qualified Fuel Cells provide customers with approximately 30% of that compliance annually. For more on renewable and clean energy, visit [delmarva.com/repsa](http://delmarva.com/repsa).

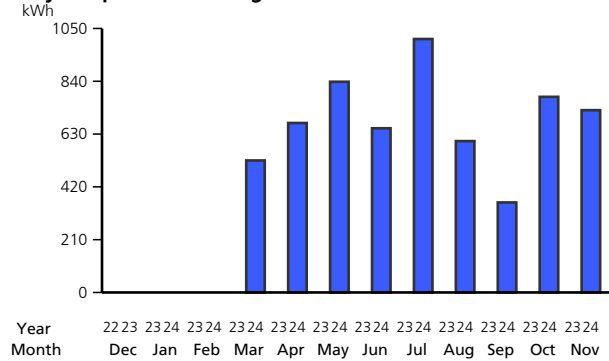
**Supply Charges:** These charges reflect the cost of producing electricity for you. You can compare this part of your bill to offers from competitive suppliers. The class average annual price to compare is 9.97 cents per kWh.

**Billing Period: Oct 26, 2024 to Nov 25, 2024 (31 days)**

<u>Type of charge</u>	<u>How we calculate this charge</u>	<u>Amount(\$)</u>
Transmission Capacity Charge	2.55 kW X \$6.2427920 per kW	15.92
Standard Offer Service Charge	725 kWh X \$0.0786370 per kWh	57.01
<b>Total Electric Supply Charges</b>		<b>72.93</b>
<b>Total Electric Charges - Residential Heating</b>		<b>127.89</b>

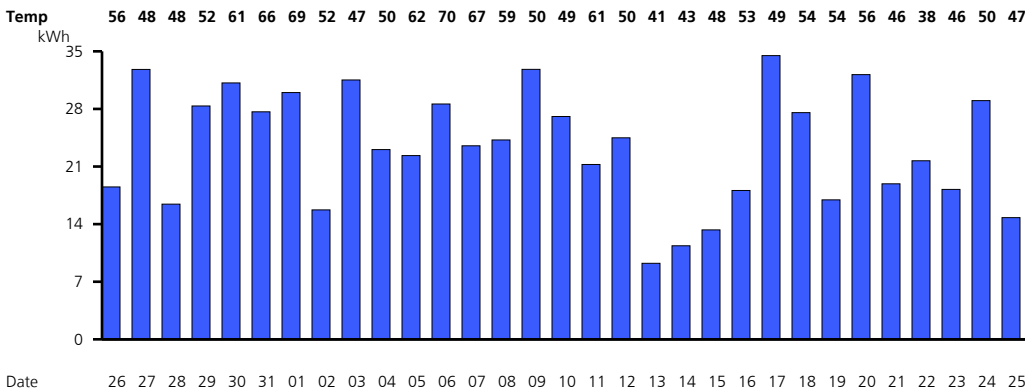
**Your monthly Electricity use in kWh**

**Daily temperature averages:** Nov 2024: 53° F



Your daily electricity use for this bill period. Visit My Account at [delmarva.com](http://delmarva.com) to see your hourly electricity use.

Meter Number 1ND396302178



Find helpful storm preparation and power outage information at [delmarva.com](http://delmarva.com)  
 You can access the Delmarva Power Delaware electric and/or gas tariffs at [delmarva.com/tariffs](http://delmarva.com/tariffs).  
 Learn how to save energy and money by registering for MyAccount at [www.delmarva.com](http://www.delmarva.com).  
 Your smart meter is read wirelessly. Visit My Account at [delmarva.com](http://delmarva.com) to view your daily and hourly energy usage.

**KEANU KOMAR**  
**Account number: 5503 6409 625**

Your electric bill for the period  
**October 26, 2024 to November 25, 2024**

You can help a Delmarva customer in need of assistance with their energy bills by contributing to the Good Neighbor Energy Fund. Simply pay exactly \$1.00 over your Delmarva bill amount and that dollar will be contributed to the Good Neighbor Energy Fund administered by a 501(c)3 non-profit organization in your community. Contributions must be exactly \$1.00 over the billed amount; amounts over \$1.00 will result in a credit to your account. Delmarva Power will also contribute \$1.00 to the fund for every \$3.00 in customer donations, up to \$70,000.