



JOSHUA MOSS
STEPHANIE MOSS
Account Number: 5503 8841 262
Service Address: 547 SEPIA CT
 NEWARK DE 19702

19 00000008 200010745

JANUARY 2025

Billing Period: 12-27-2024 to 1-29-2025

Bill Issue Date: 1-30-2025

ELECTRIC & GAS BILL SUMMARY

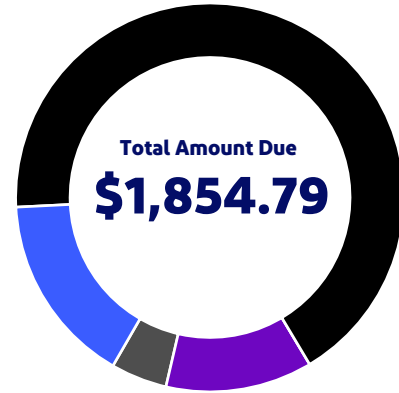
Previous Balance	\$1,007.84
Changes to Your Balance	\$239.09
<hr/>	
Balance as of Jan 30, 2025	\$1,246.93
Delivery	\$294.40
Electric	\$161.09
Gas	\$133.31
Electric Supply	\$226.53
Gas Supply	\$86.93

Total Amount Due by Feb 20, 2025 \$1,854.79

To view your usage, see the Electric & Gas Details portion of this bill or log into your account at delmarva.com.

Balance as of
01/30/2025
\$1,246.93


Delivery
\$294.40




Electric Supply
\$226.53


Gas Supply
\$86.93

Additional messages may be on the last page of your bill.

CONTACT US

Customer Service (7 a.m. - 7 p.m.)	1-800-375-7117
TTY English	1-800-232-5460
TTY Spanish	1-877-335-7595
Electric Emergencies & Outages (24 hrs)	1-800-898-8042
Natural Gas Emergencies (24 hrs)	1-302-454-0317
¿Problemas con la factura?	1-800-375-7117

delmarva.com/ContactUs

Please tear on the dotted line below. Invoice Number: 200272408548

Page 1 of 5

Return this coupon with your payment made payable to Delmarva Power.

5250 1 AV 0.386

2DE04313



JOSHUA MOSS
STEPHANIE MOSS
547 SEPIA COURT
NEWARK DE 19702-3669



Account number **5503 8841 262**
Total amount due by Feb 20, 2025 \$1,854.79

Amount Paid: \$.

PO BOX 13609
PHILADELPHIA PA 19101



100001550388412620000000001246930000000607860000001854790013

JOSHUA MOSS
STEPHANIE MOSS
 Account number: 5503 8841 262

Your electric and gas bill for the period
December 27, 2024 to January 29, 2025

Details of your Electric Charges

Residential Service - service number 0550 3884 1262 7000 5578 19
 Electricity you used this period

<u>Meter Number</u>	<u>Energy Type</u>	<u>End Date</u>	<u>Start Date</u>	<u>Number Of Days</u>	<u>Total Use</u>
NXA107305053	Use (kWh)	Jan 29 <u>Reading</u> 234889	Dec 27 <u>Reading</u> 232382	34 <u>Multiplier</u> 1	2507

Your meter records electric energy use in hourly intervals. Your bill is the total of all hourly intervals recorded during your billing period.
 End and start date kWh meter readings are provided for informational purposes only.
 Please visit My Account at delmarva.com to view your energy use data.

Electric Summary	
Balance from your last bill	\$732.85
Deposit Outstanding	\$235.00
Changes to electric balance	\$235.00
Electric Charges (Residential Service)	\$387.62
New electric charges	\$387.62
Total amount due by Feb 20, 2025	\$1,355.47

Your next bill period is scheduled to end on February 26, 2025

Delivery Charges: These charges reflect the cost of bringing electricity to you.
 Current charges for 34 days, **winter rates in effect.**

<u>Type of charge</u>	<u>How we calculate this charge</u>	<u>Amount(\$)</u>
Customer Charge		13.50
Distribution Charge	First 500 kWh X \$0.0465940 per kWh	23.30
Distribution Charge	Last 2007 kWh X \$0.0465940 per kWh	93.51
Low Income Charge	2507 kWh X \$0.0000950 per kWh	0.24
Green Energy Fund	2507 kWh X \$0.0003560 per kWh	0.89
Renewable Compliance Charge:		
Wind & Solar	2507 kWh X \$0.0063670 per kWh	15.96
Qualified Fuel Cells	2507 kWh X \$0.0027950 per kWh	7.01
Distribution System Improvement Charge	at 4.23%	5.51
Energy Efficiency Surcharge	2507 kWh X \$0.0004667 per kWh	1.17
Total Electric Delivery Charges		161.09

Check here to enroll in the Direct Debit plan Sign and date here _____

By signing here, you authorize Delmarva Power to electronically deduct the amount of your monthly bill from your checking account each month. The check you send with this signed authorization will be used to set up Direct Debit. You understand that we will notify you each month of the date and amount of the debit, which will be on or after the due date stated on your monthly bill. You understand that to withdraw this authorization you must call Delmarva Power. You understand that Delmarva Power does not charge for this service, but that your bank may have charges for this service.

Electronic Check Conversion

When you provide a check as payment, you authorize us either to use information from your check to make a one-time electronic fund transfer from your account or to process the payment as a check transaction.

JOSHUA MOSS
STEPHANIE MOSS
Account number: 5503 8841 262

Your electric and gas bill for the period
December 27, 2024 to January 29, 2025

Both the "Wind & Solar" and "Qualified Fuel Cell" portions of the Renewable Compliance Charge above provide compliance required by Delaware's Renewable Energy Portfolio Standards Act. The Qualified Fuel Cells provide customers with approximately 31% of that compliance annually. For more on renewable and clean energy, visit delmarva.com/repsa.

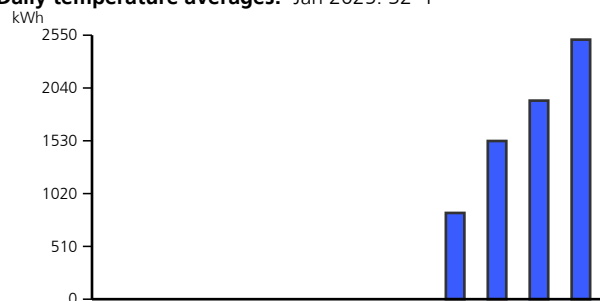
Supply Charges: These charges reflect the cost of producing electricity for you. You can compare this part of your bill to offers from competitive suppliers. The class average annual price to compare is 10.65 cents per kWh.

Billing Period: Dec 27, 2024 to Jan 29, 2025 (34 days)

<u>Type of charge</u>	<u>How we calculate this charge</u>	<u>Amount(\$)</u>
Transmission Capacity Charge	3.55 kW X \$6.2427920 per kW	22.16
Standard Offer Service Charge	First 500 kWh X \$0.0815180 per kWh	40.76
Standard Offer Service Charge	Last 2007 kWh X \$0.0815180 per kWh	163.61
Total Electric Supply Charges		226.53
Total Electric Charges - Residential Service		387.62

Your monthly Electricity use in kWh

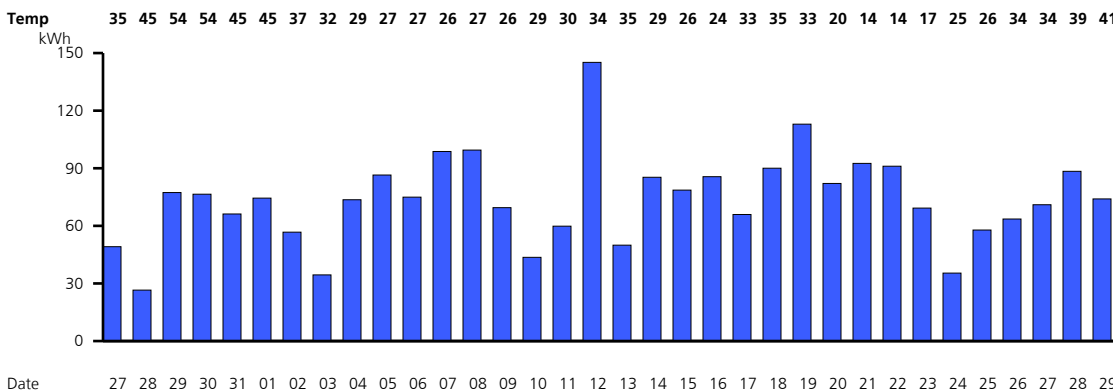
Daily temperature averages: Jan 2025: 32° F



Year: 2324 2324 2324 2324 2324 2324 2324 2324 2324 2324 2324 2425
 Month: Feb Mar Apr May Jun Jul Aug Sep Oct Nov Dec Jan

Your daily electricity use for this bill period. Visit My Account at delmarva.com to see your hourly electricity use.

Meter Number NXA107305053



Details of your Gas Charges

Residential Gas Space Heating - service number 0550 3884 1262 7000 5578 49
 Gas you used this period

Gas Summary	
Balance from your last bill	\$274.99
Continued on next page	

**JOSHUA MOSS
STEPHANIE MOSS**

Your electric and gas bill for the period
December 27, 2024 to January 29, 2025

Account number: 5503 8841 262

Meter Number Energy Type	Current Reading	Previous Reading	Difference	Multiplier	Total Use
8610061AGM Use (CCF)	Jan 29 002482 (actual)	Dec 27 002297 (actual)	185	1	185

Gas Summary Continued	
Late Payment Charge	\$4.09
Changes to gas balance	\$4.09
Gas Charges (Residential Gas Space Heating)	\$220.24
New gas charges	\$220.24
Total amount due by Feb 20, 2025	\$499.32

Your next meter reading is scheduled for February 26, 2025

Delivery Charges: These charges reflect the cost of bringing gas service to you. Current charges for 34 days, **winter rates in effect.**

Type of charge	How we calculate this charge	Amount(\$)
Customer Charge		15.00
Distribution Charge	185 CCF X \$0.6025600 per CCF	111.47
Distribution System Improvement Charge	at 5.41%	6.84
Total Gas Delivery Charges		133.31

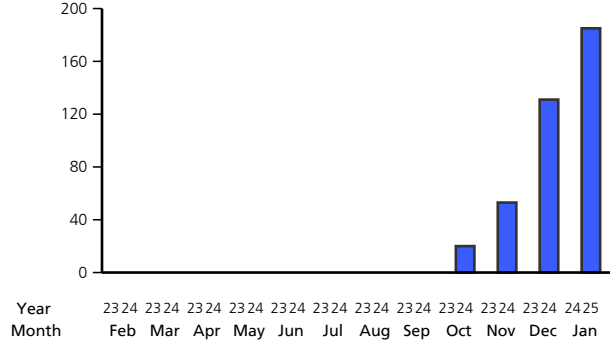
Supply Charges: These charges reflect the cost of producing gas service for you.

Billing Period: Dec 27, 2024 to Jan 29, 2025 (34 days)

Type of charge	How we calculate this charge	Amount(\$)
Gas Cost Charge	185 CCF X \$0.4699000 per CCF	86.93
Total Gas Supply Charges		86.93
Total Gas Charges - Residential Gas Space Heating		220.24

Your monthly Gas use in CCF

Daily temperature averages: Jan 2025: 32° F

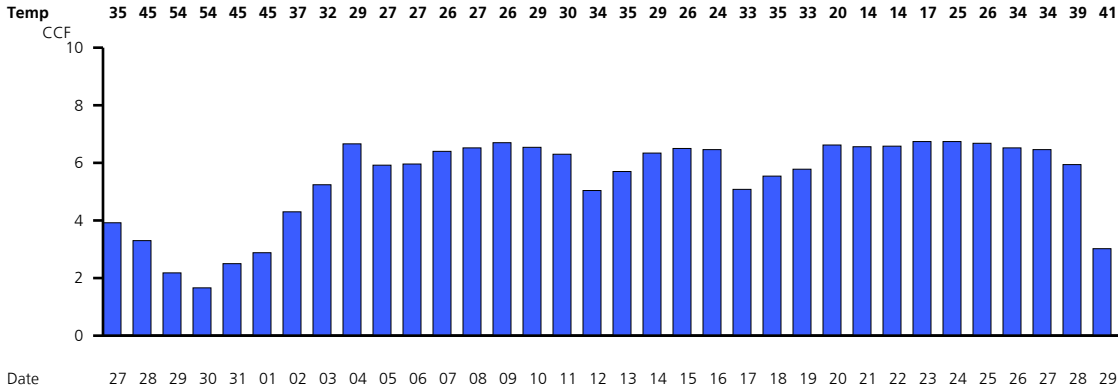


JOSHUA MOSS
STEPHANIE MOSS
Account number: 5503 8841 262

Your electric and gas bill for the period
December 27, 2024 to January 29, 2025

Your daily gas use for this bill period. Visit My Account at delmarva.com to see your hourly gas use.

Meter Number 8610061AGM



A past due amount of \$1,007.84 remained on your account at the time your bill was prepared. If payment has been made, please disregard this notice. If this amount remains unpaid, your service may be subject to disconnection. For bill payment options, visit www.delmarva.com.

Find helpful storm preparation and power outage information at delmarva.com

You can access the Delmarva Power Delaware electric and/or gas tariffs at delmarva.com/tariffs.

Learn how to save energy and money by registering for MyAccount at www.delmarva.com.

Your smart meter is read wirelessly. Visit My Account at delmarva.com to view your daily and hourly energy usage.

Effective January 1, 2025, the Distribution System Improvement Charge (DSIC) was adjusted from 2.84% to 4.23% of delivery charges for electric customers and adjusted from 7.50% to 5.41% of delivery charges for gas customers. It is subject to a review and approval process by the Delaware Public Service Commission and adjusted periodically.

Effective January 1, 2025, the Energy Efficiency Surcharge was increased for residential electric customers from \$0.000405 to \$0.000476/kWh, on an interim basis subject to final approval. The Energy Efficiency Surcharge funds energy efficiency programs to help Delaware customers reduce their energy use.

You can help a Delmarva customer in need of assistance with their energy bills by contributing to the Good Neighbor Energy Fund. Simply pay exactly \$1.00 over your Delmarva bill amount and that dollar will be contributed to the Good Neighbor Energy Fund administered by a 501(c)3 non-profit organization in your community. Contributions must be exactly \$1.00 over the billed amount; amounts over \$1.00 will result in a credit to your account. Delmarva Power will also contribute \$1.00 to the fund for every \$3.00 in customer donations, up to \$70,000.