

**ELECTRIC & GAS BILL SUMMARY**

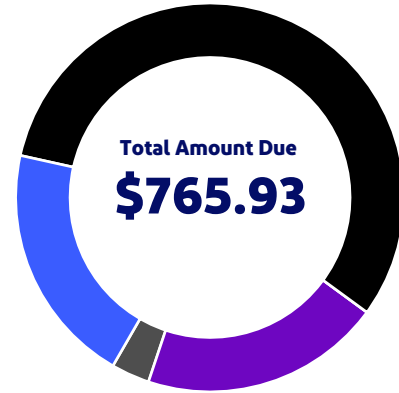
Previous Balance	\$197.83
Changes to Your Balance	\$235.56
<hr/>	
Balance as of Nov 27, 2024	\$433.39
Delivery	\$154.24
Electric	\$105.16
Gas	\$49.08
Electric Supply	\$153.78
Gas Supply	\$24.52

**Total Amount Due by Dec 18, 2024** **\$765.93**

To view your usage, see the Electric & Gas Details portion of this bill or log into your account at delmarva.com.

Balance as of  
11/27/2024  
\$433.39

  
Delivery  
\$154.24



  
Electric Supply  
\$153.78

  
Gas Supply  
\$24.52

Additional messages may be on the last page of your bill.

**CONTACT US**

Customer Service (7 a.m. - 7 p.m.)	1-800-375-7117
TTY English	1-800-232-5460
TTY Spanish	1-877-335-7595
Electric Emergencies & Outages (24 hrs)	1-800-898-8042
Natural Gas Emergencies (24 hrs)	1-302-454-0317
¿Problemas con la factura?	1-800-375-7117

[delmarva.com/ContactUs](http://delmarva.com/ContactUs)

Please tear on the dotted line below. Invoice Number: 200322373514

Page 1 of 5

**Return this coupon** with your payment made payable to Delmarva Power.

Account number **5503 8841 262**  
**Total amount due by Dec 18, 2024** **\$765.93**

16054 1 AV 0.386 2DE14896



JOSHUA MOSS  
STEPHANIE MOSS  
547 SEPIA COURT  
NEWARK DE 19702-3669



Amount Paid: \$    .

PO BOX 13609  
PHILADELPHIA PA 19101



100001550388412620000000000433390000000332540000000765930017

**JOSHUA MOSS**  
**STEPHANIE MOSS**  
 Account number: 5503 8841 262

Your electric and gas bill for the period  
**October 26, 2024 to November 25, 2024**

**Details of your Electric Charges**

Residential Service - service number 0550 3884 1262 7000 5578 19  
 Electricity you used this period

<u>Meter Number</u>	<u>Energy Type</u>	<u>End Date</u>	<u>Start Date</u>	<u>Number Of Days</u>	<u>Total Use</u>
NXA107305053	Use (kWh)	Nov 25 <u>Reading</u> 230465	Oct 26 <u>Reading</u> 228937	31 <u>Multiplier</u> 1	1528

Your meter records electric energy use in hourly intervals. Your bill is the total of all hourly intervals recorded during your billing period.  
 End and start date kWh meter readings are provided for informational purposes only.  
 Please visit My Account at delmarva.com to view your energy use data.

<b>Electric Summary</b>	
<b>Balance from your last bill</b>	<b>\$160.66</b>
Deposit Outstanding	\$235.00
<b>Changes to electric balance</b>	<b>\$235.00</b>
Electric Charges (Residential Service)	\$258.94
<b>New electric charges</b>	<b>\$258.94</b>
<b>Total amount due by Dec 18, 2024</b>	<b>\$654.60</b>

**Your next bill period is scheduled to end on December 26, 2024**

**Delivery Charges:** These charges reflect the cost of bringing electricity to you.  
 Current charges for 31 days, **winter rates in effect.**

<u>Type of charge</u>	<u>How we calculate this charge</u>	<u>Amount(\$)</u>
Customer Charge		13.50
Distribution Charge	First 500 kWh X \$0.0465940 per kWh	23.30
Distribution Charge	Last 1028 kWh X \$0.0465940 per kWh	47.90
Low Income Charge	1528 kWh X \$0.0000950 per kWh	0.15
Green Energy Fund	1528 kWh X \$0.0003560 per kWh	0.54
Renewable Compliance Charge:		
Wind & Solar	1528 kWh X \$0.0063670 per kWh	9.73
Qualified Fuel Cells	1528 kWh X \$0.0045900 per kWh	7.01
Distribution System Improvement Charge	at 2.84%	2.41
Energy Efficiency Surcharge	1528 kWh X \$0.0004050 per kWh	0.62
<b>Total Electric Delivery Charges</b>		<b>105.16</b>

**Check here to enroll in the Direct Debit plan**      Sign and date here \_\_\_\_\_

By signing here, you authorize Delmarva Power to electronically deduct the amount of your monthly bill from your checking account each month. The check you send with this signed authorization will be used to set up Direct Debit. You understand that we will notify you each month of the date and amount of the debit, which will be on or after the due date stated on your monthly bill. You understand that to withdraw this authorization you must call Delmarva Power. You understand that Delmarva Power does not charge for this service, but that your bank may have charges for this service.

**Electronic Check Conversion**

When you provide a check as payment, you authorize us either to use information from your check to make a one-time electronic fund transfer from your account or to process the payment as a check transaction.

**JOSHUA MOSS**  
**STEPHANIE MOSS**  
**Account number: 5503 8841 262**

Your electric and gas bill for the period  
**October 26, 2024 to November 25, 2024**

Both the "Wind & Solar" and "Qualified Fuel Cell" portions of the Renewable Compliance Charge above provide compliance required by Delaware's Renewable Energy Portfolio Standards Act. The Qualified Fuel Cells provide customers with approximately 30% of that compliance annually. For more on renewable and clean energy, visit [delmarva.com/repsa](http://delmarva.com/repsa).

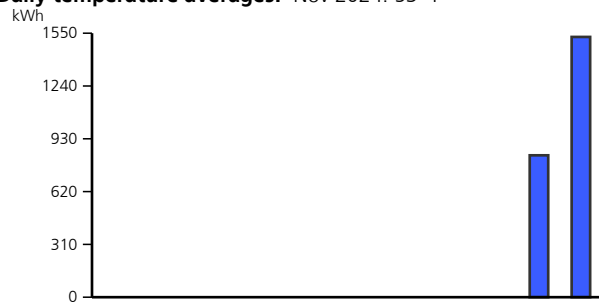
**Supply Charges:** These charges reflect the cost of producing electricity for you. You can compare this part of your bill to offers from competitive suppliers. The class average annual price to compare is 10.65 cents per kWh.

**Billing Period: Oct 26, 2024 to Nov 25, 2024 (31 days)**

<u>Type of charge</u>	<u>How we calculate this charge</u>	<u>Amount(\$)</u>
Transmission Capacity Charge	4.68 kW X \$6.2427920 per kW	29.22
Standard Offer Service Charge	First 500 kWh X \$0.0815180 per kWh	40.76
Standard Offer Service Charge	Last 1028 kWh X \$0.0815180 per kWh	83.80
<b>Total Electric Supply Charges</b>		<b>153.78</b>
<b>Total Electric Charges - Residential Service</b>		<b>258.94</b>

**Your monthly Electricity use in kWh**

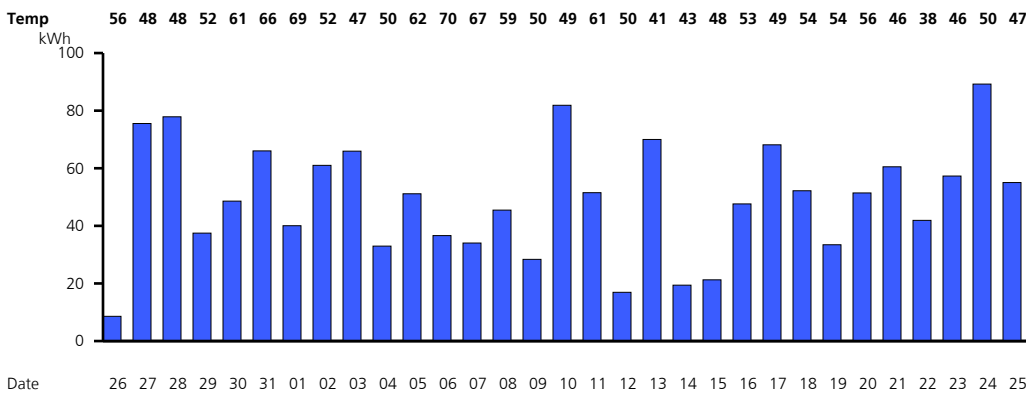
Daily temperature averages: Nov 2024: 53° F



Year	22	23	23	24	23	24	23	24	23	24	23	24	23	24
Month	Dec	Jan	Feb	Mar	Apr	May	Jun	Jul	Aug	Sep	Oct	Nov		

Your daily electricity use for this bill period. Visit My Account at [delmarva.com](http://delmarva.com) to see your hourly electricity use.

Meter Number NXA107305053



**Details of your Gas Charges**

Residential Gas Space Heating - service number 0550 3884 1262 7000 5578 49  
 Gas you used this period

<b>Gas Summary</b>	
Balance from your last bill	<b>\$37.17</b>
Continued on next page	

**JOSHUA MOSS  
STEPHANIE MOSS**

Your electric and gas bill for the period  
**October 26, 2024 to November 25, 2024**

**Account number: 5503 8841 262**

Meter Number Energy Type	Current Reading	Previous Reading	Difference	Multiplier	Total Use
8610061AGM Use (CCF)	Nov 25 002166 (actual)	Oct 26 002113 (actual)	53	1	53

<b>Gas Summary Continued</b>	
Late Payment Charge	\$0.56
<b>Changes to gas balance</b>	<b>\$0.56</b>
Gas Charges (Residential Gas Space Heating)	\$73.60
<b>New gas charges</b>	<b>\$73.60</b>
<b>Total amount due by Dec 18, 2024</b>	<b>\$111.33</b>

**Your next meter reading is scheduled for December 26, 2024**

**Delivery Charges:** These charges reflect the cost of bringing gas service to you. Current charges for 31 days, **winter rates in effect.**

Type of charge	How we calculate this charge	Amount(\$)
Customer Charge		15.00
Distribution Charge	53 CCF X \$0.6025600 per CCF	31.94
EDIT Credit 6 Year - CCF	53 CCF X \$0.0242440- per CCF	1.28-
Distribution System Improvement Charge	at 7.5%	3.42
<b>Total Gas Delivery Charges</b>		<b>49.08</b>

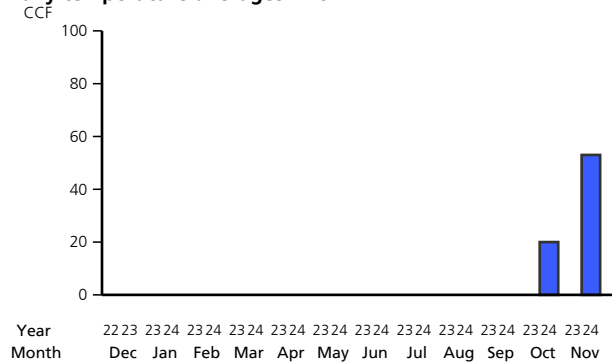
**Supply Charges:** These charges reflect the cost of producing gas service for you.

**Billing Period: Oct 26, 2024 to Nov 25, 2024 (31 days)**

Type of charge	How we calculate this charge	Amount(\$)
Gas Cost Charge	53 CCF X \$0.4626415 per CCF	24.52
<b>Total Gas Supply Charges</b>		<b>24.52</b>
<b>Total Gas Charges - Residential Gas Space Heating</b>		<b>73.60</b>

**Your monthly Gas use in CCF**

**Daily temperature averages:** Nov 2024: 53° F

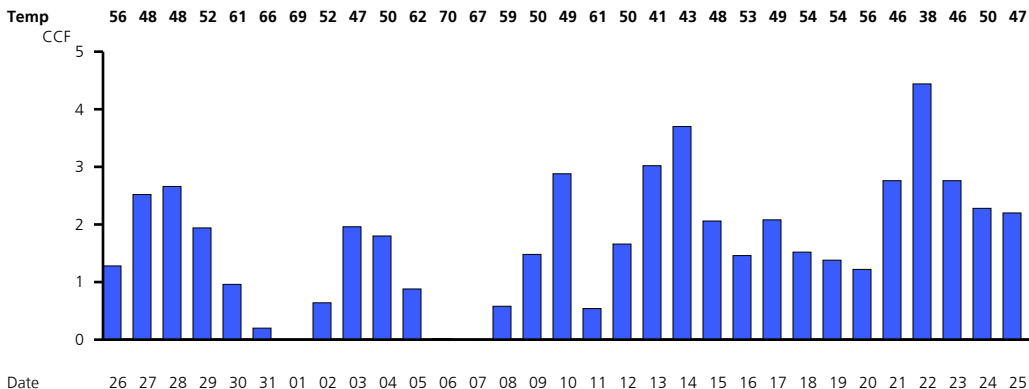


**JOSHUA MOSS**  
**STEPHANIE MOSS**  
**Account number: 5503 8841 262**

Your electric and gas bill for the period  
**October 26, 2024 to November 25, 2024**

Your daily gas use for this bill period. Visit My Account at delmarva.com to see your hourly gas use.

Meter Number 8610061AGM



**A past due amount of \$197.83 remained on your account at the time your bill was prepared. If payment has been made, please disregard this notice. If this amount remains unpaid, your service may be subject to disconnection. For bill payment options, visit [www.delmarva.com](http://www.delmarva.com).**

Find helpful storm preparation and power outage information at [delmarva.com](http://delmarva.com)

You can access the Delmarva Power Delaware electric and/or gas tariffs at [delmarva.com/tariffs](http://delmarva.com/tariffs).

Learn how to save energy and money by registering for MyAccount at [www.delmarva.com](http://www.delmarva.com).

Deposit in the amount of \$235.00 has been requested for service at this location.

Your smart meter is read wirelessly. Visit My Account at [delmarva.com](http://delmarva.com) to view your daily and hourly energy usage.

You can help a Delmarva customer in need of assistance with their energy bills by contributing to the Good Neighbor Energy Fund. Simply pay exactly \$1.00 over your Delmarva bill amount and that dollar will be contributed to the Good Neighbor Energy Fund administered by a 501(c)3 non-profit organization in your community. Contributions must be exactly \$1.00 over the billed amount; amounts over \$1.00 will result in a credit to your account. Delmarva Power will also contribute \$1.00 to the fund for every \$3.00 in customer donations, up to \$70,000.