



SERVICE ADDRESS	ACCOUNT NUMBER	DUE DATE
JESSICA L WARNER 2825 18TH ST BOULDER, CO 80304-3601	53-0513555-7	05/05/2025
	STATEMENT NUMBER	STATEMENT DATE
	923153897	04/15/2025
		AMOUNT DUE
		\$122.74

YOUR MONTHLY ELECTRICITY USAGE



DAILY AVERAGES	Last Year	This Year
Temperature	46° F	49° F
Electricity kWh	16.7	10.8
Electricity Cost	\$1.09	-\$0.31

YOUR MONTHLY NATURAL GAS USAGE



DAILY AVERAGES	Last Year	This Year
Temperature	48° F	49° F
Gas Therms	4.5	4.3
Gas Cost	\$4.47	\$4.56

SUMMARY OF CURRENT CHARGES (detailed charges begin on page 2)

Electricity Service	03/13/25 - 04/13/25	334 kWh	\$60.20
Natural Gas Service	03/17/25 - 04/15/25	125 therms	\$132.24
Other Recurring Charges			-\$69.70 CR
Current Charges			\$122.74

ACCOUNT BALANCE (Balance de su cuenta)

Previous Balance	As of 03/13	\$255.05
Payment Received	Credit Card 04/01	-\$255.05 CR
Balance Forward		\$0.00
Current Charges		\$122.74
Amount Due (Cantidad a pagar)		\$122.74

INFORMATION ABOUT YOUR BILL

Now that you have a new electric meter, your monthly bill will look different than it has in the past and will show your electric use during different segments of the day. You can also sign up at xcelenergy.com/MyAccount to see your billing history and other helpful information.

Thank you for your payment.

QUESTIONS ABOUT YOUR BILL?

See our website: xcelenergy.com

Call Mon - Fri 7 a.m.-7 p.m. or Sat 9 a.m.-5 p.m.

Please Call: 1-800-895-4999

Español: 1-800-687-8778

Or write us at: XCEL ENERGY
PO BOX 8
EAU CLAIRE WI 54702-0008



RETURN BOTTOM PORTION WITH PAYMENT ONLY • PLEASE DO NOT INCLUDE OTHER REQUESTS • SEE BACK OF BILL FOR CONTACT METHODS



Please help our neighbors in need by donating to Energy Outreach Colorado. Please mark your donation amount on the back of this payment stub and CHECK THE RED BOX under your address below.

----- manifest line -----



JESSICA L WARNER
2825 18TH ST
BOULDER CO 80304-3601

ACCOUNT NUMBER	DUE DATE	AMOUNT DUE	AMOUNT ENCLOSED
53-0513555-7	05/05/2025	\$122.74	

Please see the back of this bill for more information regarding the late payment charge.
Make your check payable to XCEL ENERGY

MAY						
S	M	T	W	T	F	S
				1	2	3
4	5	6	7	8	9	10
11	12	13	14	15	16	17
18	19	20	21	22	23	24
25	26	27	28	29	30	31



XCEL ENERGY
P.O. BOX 660553
DALLAS TX 75266-0553



31 53050525 05135557 0000001227400000012274

051796 1/3

11



SERVICE ADDRESS	ACCOUNT NUMBER	DUE DATE
JESSICA L WARNER 2825 18TH ST BOULDER, CO 80304-3601	53-0513555-7	05/05/2025
	STATEMENT NUMBER	STATEMENT DATE
	923153897	04/15/2025
		AMOUNT DUE
		\$122.74

SERVICE ADDRESS: 2825 18TH ST BOULDER, CO 80304-3601
NEXT READ DATE: 05/15/25

ELECTRICITY SERVICE DETAILS (See back of your bill for explanation of billing terms)

PREMISES NUMBER: 301952281
INVOICE NUMBER: 1176396405

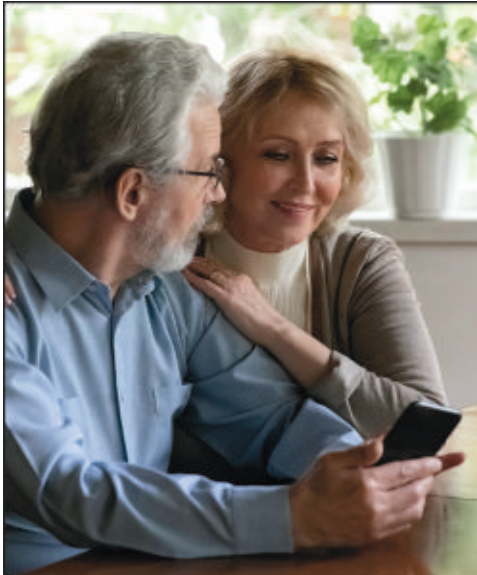
METER READING INFORMATION

METER 352122964			
Read Dates: 03/13/25 - 04/13/25 (31 Days)			
DESCRIPTION	CURRENT READING	PREVIOUS READING	USAGE
Mid Pk Energy	19 Actual	0 Actual	19 kWh
On-Peak Energy	41 Actual	0 Actual	41 kWh
Off-Peak Energy	274 Actual	0 Actual	274 kWh
Total Energy	334 Actual	0 Actual	334 kWh

ELECTRICITY CHARGES

RATE: RETOU Res Energy TOU

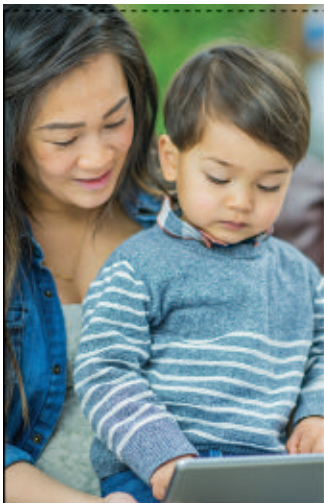
DESCRIPTION	USAGE UNITS	RATE	CHARGE
Service & Facility			\$7.10
RETOU On-Peak	41 kWh	\$0.131710	\$5.40
RETOU Mid Pk/Shoulder	19 kWh	\$0.104600	\$1.99
RETOU Off-Peak	274 kWh	\$0.077490	\$21.23
Trans Cost Adj	28.62	8.30%	\$2.38
ECA Q1	16.62	31.45%	\$5.23
ECA Q2	12	33.87%	\$4.06
Demand Side Mgmt	28.62	10.13%	\$2.90
PurchCapCostAdj	28.62	3.62%	\$1.04
Trans Elec Plan	28.62	1.29%	\$0.37
Renew. Energy Std Adj			\$0.51
Colo Energy Plan Adj			\$0.51
Clean Energy Plan Rev			\$0.26
Energy Assistance Chg			\$0.81
Subtotal			\$53.79
Franchise Fee		3.00%	\$1.60
Climate Tax		4.93%	\$2.61
Sales Tax			\$2.20
Total			\$60.20



**WHERE THERE'S
A BILL, THERE'S
A BETTER WAY**

From averaged monthly payments to custom due dates to automatic bill pay, we can help you tailor your energy bill so it better suits your schedule and budget.

Get started at
xcelenergy.com/MyBill.



TOGETHER WE POWER STABILITY.

Energy Outreach Colorado is a nonprofit partnering with Xcel Energy to provide energy bill payment assistance and energy-efficiency upgrades for affordable housing and nonprofit facilities. We need your help today! There are three ways to contribute:



1. Visit the Energy Outreach Colorado website at www.energyoutreach.org to make a one-time donation.

2. **CHECK THE RED BOX** on the front-left side of this payment stub AND select a tax-deductible contribution below.

MONTHLY DONATION:

\$20 _____ **\$10** _____ **\$5** _____ **Other** _____

3. Make a one-time, tax-deductible contribution of \$ _____
Enclose this form with your Xcel Energy payment. Or, mail to:
ATTN PAR Dept., PO BOX 8, EAU CLAIRE, WI 54702-0008
(Please make your check payable to Energy Outreach Colorado.)

Customers that choose to donate will have account information securely shared with Energy Outreach Colorado for tax purposes only.



SERVICE ADDRESS	ACCOUNT NUMBER	DUE DATE
JESSICA L WARNER 2825 18TH ST BOULDER, CO 80304-3601	53-0513555-7	05/05/2025
	STATEMENT NUMBER	STATEMENT DATE
	923153897	04/15/2025
		AMOUNT DUE
		\$122.74

SERVICE ADDRESS: 2825 18TH ST BOULDER, CO 80304-3601
 NEXT READ DATE: 05/15/25

NATURAL GAS SERVICE DETAILS (See back of your bill for explanation of billing terms)

PREMISES NUMBER: 301952281
 INVOICE NUMBER: 0556556596

METER READING INFORMATION			
METER A1451988	Read Dates: 03/17/25 - 04/15/25 (29 Days)		
DESCRIPTION	CURRENT READING	PREVIOUS READING	USAGE
Total Energy	3519 Actual	3379 Actual	140 ccf

NATURAL GAS ADJUSTMENTS

DESCRIPTION	VALUE UNITS	CONVERSION	VALUE UNITS
Therm Multiplier	140 ccf	x 0.891174	125 therms

NATURAL GAS CHARGES RATE: RG Residential

DESCRIPTION	USAGE UNITS	RATE	CHARGE
Service & Facility			\$11.00
Usage Charge	125 therms	\$0.317170	\$39.65
Interstate Pipeline	125 therms	\$0.057400	\$7.18
Natural Gas Q1	57.94 therms	\$0.317800	\$18.41
Natural Gas Q2	67.06 therms	\$0.394100	\$26.43
Demand Side Mgmt			\$5.47
GRSA			\$9.10
Energy Assistance Chg			\$0.81
Subtotal			\$118.05
Franchise Fee		3.00%	\$3.52
Climate Tax		4.93%	\$5.78
Sales Tax			\$4.89
Total			\$132.24

OTHER RECURRING CHARGES DETAILS

DESCRIPTION	CHARGE
Solar* Rewards Community Solar Production Credit	
Solar Production Period	March 2025
SRC075016 Production Credit	816.56 kWh x -0.085360
Total	- \$69.70 CR



STAY SAFE. CALL 811 BEFORE YOU DIG.

Whether it's a major project or just some gardening, be sure to call 811 before any digging. It's smart. It's easy. And it helps keep everyone safe.

For more information visit xcelenergy.com/Safety.



051796 2/3



04/15/2025

53-0513555-7

IMPORTANT PHONE NUMBERS (Available 24 hours, 7 days a week)

Electric Emergencies: **800-895-1999** Natural Gas Emergencies: **800-895-2999** Call Before You Dig: **811** Telecommunications Relay Service (TRS): **711**

CONVENIENT WAYS TO PAY YOUR BILL

Standard Payment Options (no fees apply):

- **My Account:** View and pay your bill using our mobile app, see your energy use and access your account information.
- **Auto Pay:** Automatically pay your bill directly from your bank account.
- **Pay Online:** View and pay your bill online using MyCheckFree.
- **Pay by Phone:** Make your payment from your checking or savings account with a phone call to **800-895-4999**.

Colorado Energy Plan Adjustment

(Colo Energy Plan Adj): funds voluntary early retirement for Xcel Energy's coal-fired power plants as part of our plan to cut carbon emissions by 2030 and provide net-zero energy by 2050.

Demand Charge: recovers costs to produce and deliver power to you, including the costs of poles and wires, transmission and distribution facilities in the power grid.

Demand Peak Day Quantity (Demand PDQ): this charge is for large commercial and industrial customers only. It's a measurement of their highest daily use of electricity during a monthly billing cycle.

Demand-Side Management Cost Adjustment (Demand Side Mgmt): recovers costs of energy efficiency and conservation programs that encourage customers to reduce their energy use. If you receive electricity and natural gas from us you will see two charges.

Energy Assistance Charge: Required by House Bill 21-1105, we collect and remit this monthly charge to Energy Outreach Colorado for bill assistance for income-qualified customers. If you receive electricity and natural gas from us you will see two charges. If you're struggling to pay your utility bills, you might qualify for exemption from a monthly charge related to energy assistance and be eligible for utility bill payment assistance. Please call 1-866-HEAT-HELP to see if you qualify. You may request to opt out of this charge by calling 800-895-4999.

Si tiene dificultades para pagar sus facturas de energía, es posible que reúna los requisitos para recibir asistencia para pagar sus facturas y que sea elegible para la exención del cargo por asistencia energética. Llame al 1-866-HEAT-HELP (1-866-432-8435) para ver si califica para recibir asistencia.

Electric Commodity Adjustment (ECA): recovers the cost of fuel used to generate the electricity you use. We pass on the wholesale cost to customers without a markup. Costs are adjusted on a quarterly basis to reflect market conditions.

Energy Charge: the variable costs of producing energy not collected through quarterly commodity adjustments.

Franchise Fee: this surcharge pays cities and counties for the right to use public streets to provide utility services. We collect the surcharges and pass them to your city and county.

- **Pay by Mail:** Return the enclosed pre-addressed envelope to **Xcel Energy, PO Box 660553, Dallas, TX 75266-0553**. Include the attached bill stub for faster processing along with your payment. Apply proper postage.

Electronic Check Conversion: When you provide a check as payment, you authorize us either to use information from your check to make a one-time electronic fund transfer from your account or to process the payment as a check transaction.

Other Payment Options

Third-Party processing fees will apply. Xcel Energy does not collect or benefit from these fees:

- **Credit/Debit Card Payment:** To pay with your card, use **MyAccount** or **eBill** or call **833-660-1365**.
- **Pay Stations:** Visit **xcelenergy.com** to find an in-person location near you.

GLOSSARY

Gas Cost Adjustment (Gas Cost Adj or Natural Gas): recovers the cost of natural gas purchased and delivered to you, including natural gas fuel, upstream transportation and storage services. We pass on the wholesale cost to customers without a markup. Costs are adjusted on a quarterly basis to reflect market conditions.

General Rates: your base rate charge, which includes the Service and Facility Charge, metering charges, a Demand Charge (if applicable), plus either an Energy Charge for electric service or the Usage Charge for gas service, as applicable.

General Rate Schedule Adjustments (GRSA): a percentage amount of your bill calculated for base rate charges, excluding the Service and Facility Charge for gas customers, the Energy or Usage Charge and the Demand or Capacity Charge. The adjustment can be positive or negative and is applied to your electric and/or natural gas bill.

Interstate Pipeline: reflects Xcel Energy's payments to interstate pipelines and storage facility operators to deliver natural gas into Xcel Energy's gas system. The Federal Energy Regulatory Commission regulates these upstream services and the rates charged to Xcel Energy.

Kilowatt Hour (kWh): Measures the amount of electricity you use.

Late Payment Charge: we assess a late payment charge on any unpaid balance exceeding \$50.00. For residential customers, a late payment charge of 1% per month is applied. For commercial customers, a 1.5% late payment charge will be assessed.

Load Meter Charge: a flat monthly charge for those with customer-owned generation in parallel with Xcel Energy's system. This fee is for the cost of the meter needed for these accounts.

Natural Gas: reflects our cost to purchase natural gas fuel at market prices as approved by the Colorado Public Utilities Commission.

Production Meter Charge: a flat monthly charge for customers who have on-site power generation, like rooftop solar, and are connected to Xcel Energy's system. This fee is for the cost of the meter needed for these accounts.

Purchased Capacity Cost Adjustment (Purchased Cap Cost Adj): the cost to purchase electric generation from other suppliers.

Renewable Energy Standard Adjustment

(Renew Energy Std Adj): a base rate charge which represents 1% of an electric bill and funds renewable energy programs as required by Colorado law under which utilities must generate or purchase increasing portions of their electricity from sun, wind or biomass.

Revenue Decoupling Adjustment: supports a program designed to encourage conservation without penalizing the energy provider for the reduction of electricity use. Adjusted quarterly, customers will either see a bill credit or a surcharge not to exceed 3% of your overall bill.

Service & Facility Charge: a flat monthly charge for the meter on your home, having the meter read, billing support and customer service needs.

Time-of-Use Rates: electricity use charges for customers on our time-differentiated pricing plan. Electricity pricing varies depending on when you use it. The On-Peak period is 3-7 p.m., weekdays except holidays; Mid-Peak is 1-3 p.m., weekdays except holidays; Off-Peak is all other hours.

Therm: Measures your natural gas use. One therm is equal to 100 cubic feet of natural gas. A dekatherm is 10 therms.

Therm Multiplier: natural gas usage is measured in therms. This is the conversion from the volume of natural gas (cubic feet) to energy use (therms).

Transmission Cost Adjustment (Trans Cost Adj): recovers transmission investments for infrastructure to carry electricity from a power plant to your home and business that results in a net increase in transmission capacity or are part of an approved Wildfire Mitigation Plan. Also recovers distribution costs pursuant to Colorado Senate Bill 24-218.

Transportation Electrification Plan Adjustment (Trans Elec Plan): funds programs to help customers unlock the benefits of electric transportation.

Usage Charge: this charge covers the costs for providing natural gas service, including moving natural gas through pipelines and storage to your home or business, that are not recovered through other charges.

RESOURCES TO BETTER UNDERSTAND YOUR BILL

Find more information online about ways to pay and manage your bill, how to read your bill, energy assistance programs and more. Bills are even easier online. Go paperless. Download our Mobile App to manage your bill with ease and when you're on the go. Available now in the Apple Store and in Google Play.

Billing summary note: depending on the date your bill was calculated, you may see a line item included twice, showing different quarterly adjustments.



WHERE DOES YOUR ELECTRICITY COME FROM?



One of Xcel Energy's key priorities is to keep costs low for our customers as we proactively work to provide safe, reliable and increasingly clean energy. Today, we serve our Colorado customers with electricity that's 45% carbon-free and have reduced carbon emissions by 57%.

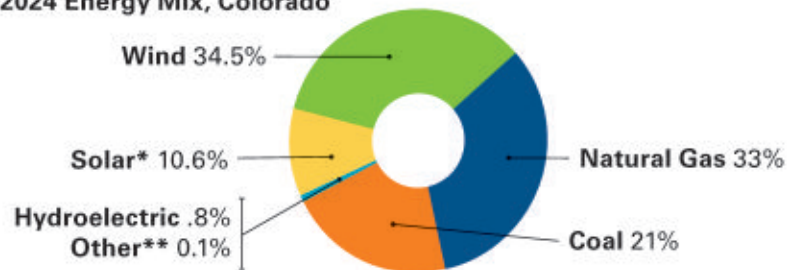
Our Colorado Clean Energy Plan will help to further reduce carbon emissions, with approximately 80% of customers' electricity coming from renewable sources by the end of the decade. It will add about 6,100 megawatts of new generation — including solar, wind, battery storage and strategically necessary amounts of natural gas — which will significantly increase the amount of renewable energy on our system.

Implementing this plan is an important step towards achieving a carbon-free future and brings forward new projects that will help achieve our emission reduction goals using a diverse mix of resources.

To learn more, visit xcelenergy.com/OurEnergyFuture.

Power supply mix: Our Colorado energy mix includes natural gas, wind, coal, solar and hydroelectric power. Energy sources for power that we generated or purchased for all energy customers in 2024:

2024 Energy Mix, Colorado



Visit xcelenergy.com for more information about the resources that produce your electricity, including the average cost of each resource.

*Includes wind and solar energy generated through Xcel Energy's renewable energy programs: Windsource, Renewable*Connect, Solar*Rewards Community and Solar*Rewards.
 **Includes purchased biomass, oil and nuclear power.

Price components: Percentage components for an average monthly electric bill:



Power supply: Costs include all purchased power and energy source costs. For generation plants owned by Xcel Energy, power supply costs also include labor at generation plants, depreciation of generation plants, allocated overhead, taxes and a profit component.

Power delivery: Includes specific labor associated with transmission and distribution facilities, metering, billing, customer service, allocated overheads, taxes and a profit component.

Example: If your residential bill for this month is \$92.65, then about 58% (or \$53.54 of your bill) is for the electricity itself, and about 42% (or \$39.11) covers the cost of having the electricity delivered to your home.

Note: Price component information applies to the average customer and may differ when applied to individual customers. Additional information is available upon request.



