



Bill Date: April 25, 2025  
Account #: 0000000010181348-7  
Invoice #: 18500832  
Read Cycle: 18

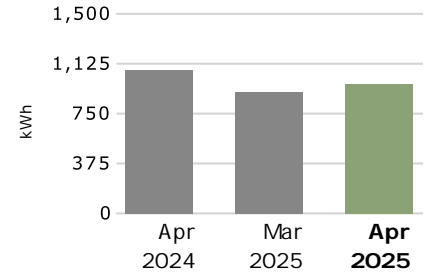
ELAINE R EATON  
54 HARBOR DR  
BASS HARBOR

### Billing Summary

<b>Service Period:</b> Mar 24, 2025 - Apr 23, 2025	
Previous Balance	\$243.07
Payment Made	-\$243.07
<b>Remaining Balance</b>	<b>\$0.00</b>
<hr/>	
New Charges (see page 2)	\$270.10
<hr/>	
<b>Total Current Charges</b>	<b>\$270.10</b>
<hr/>	
<b>Total Amount Due By May 23, 2025</b>	<b>\$270.10</b>

### Your Energy Insight

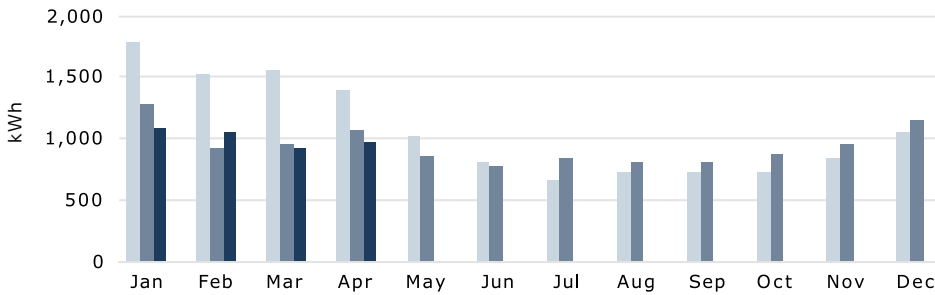
This month your usage **decreased 10%** compared to the same time as last year.



Total Monthly kWh	1,075	916	<b>968</b>
Avg Daily kWh	34	30	<b>32</b>
Avg Daily Cost	\$8.73	\$7.84	<b>\$9.00</b>
Service Days	32	31	<b>30</b>

### Monthly Energy kWh Usage

2023 2024 2025



#### April Rate Changes

Bangor Hydro District and Maine Public District customers will see distribution rate changes. These are effective April 1, 2025. Visit our website for details.

VB\_20250425\_170004\_511\_1020.xml



#### Additional Ways To Pay

<b>By Phone</b> Call (207) 973-2000 for payment by debit or credit card.	<b>Online</b> Pay by credit/debit or set up autopay online: <a href="https://www.versantpower.com/my-account">versantpower.com/my-account</a>
---	--

There may be a fee for certain transactions.

Make check payable to: Versant Power  
Do not mail cash

Account #: 0000000010181348-7  
Payment Due By: May 23, 2025

**Total Due: \$270.10**

Payment Amount \$


ELAINE R EATON  
54 HARBOR DR  
BASS HARBOR ME 04653

VERSANT POWER  
PO BOX 16044  
LEWISTON ME 04243-9527  
[Barcode]


0000000010181348 0000027010 7

## New Charges

### Bangor Hydro District (Rate A-4 Home Eco TOU)

 Versant Delivery	kWh	Price	
Distribution Off-peak	90.767	\$0.02086	\$1.89
Distribution Off-peak	298.233	\$0.02579	\$7.69
Distribution Peak	64.4	\$0.10419	\$6.71
Distribution Peak	211.6	\$0.12883	\$27.26
Distribution Shoulder	70.7	\$0.08437	\$5.96
Distribution Shoulder	232.3	\$0.10432	\$24.23
Transmission	968	\$0.05646	\$54.65
Stranded Costs	968	-\$0.00172	-\$1.66
Public Policy Charge		\$11.64	\$11.64
Conservation	968	\$0.00641	\$6.20
<b>Taxes and Fees</b>			
Customer Charge			\$20.36
Maine State Sales Tax			\$1.65
<b>Versant Delivery Subtotal</b>			<b>\$166.58</b>

### Standard Offer Service

 Supply Service	kWh	Price	
Electricity Supply	968	\$0.105628	\$102.25
<b>Taxes and Fees</b>			
Maine State Sales Tax			\$1.27
<b>Supplier Subtotal</b>			<b>\$103.52</b>

**Versant Delivery + Supplier Charges = \$270.10**

## Meter Read

Meter#: 8019043

Service Period: Mar 24, 2025 - Apr 23, 2025

Current Reading	Previous Reading
<b>24374</b>	<b>- 23406</b>

Total kWh: 30 Day(s)

**968**

Due to rounding, your meter readings shown may not match the billed kWh.

## Supplier Message

### Standard Offer

Your electricity price for Standard Offer service for the period of January 1, 2025 through December 31, 2025 is \$0.105628 per kWh.

### About Your Energy Supply

You're on Standard Offer. Did you know you can choose your Energy Supplier? Versant Power does not supply energy, but provides billing & payment services on behalf of your electricity supplier.

## Billing Terminology

For further definitions on your energy bill terms, please visit us online at:

<https://www.versantpower.com/accounts-services/understanding-your-bill>

### kWh (kilowatt hour)

The amount of electricity you use is measured in kilowatt hours (kWh) by a meter. For example, a 100-watt light bulb used for 10 hours will consume 1,000 Watt hours, or one kWh.

### Estimated Bill

If we are unable to obtain a scheduled meter reading, your bill will be estimated based on the amount of kWh consumed based on past usage.

### Sales Tax Exceptions

Maine state sales tax does not apply for the first 750 kilowatt hours (kWh) of residential usage.

### Late Payment

The amount not paid by the Due Date on the bill will be subject to a late payment fee of 0.949% on the unpaid balance.

### Payment Arrangement

If you have trouble paying your bill, a payment arrangement may help. Please call customer service for more information.

### Delivery Rates

Maine's rates are approved by the Maine Public Utilities Commission. Copies of our rate schedules are available online at [www.versantpower.com](http://www.versantpower.com)

### Distribution

This recovers the costs of the local system - including poles, wires, and substations - used for delivery of power from the bulk grid system to your home or business.

### Transmission

This recovers the costs of the high-voltage system that transports bulk power.

### Stranded Costs

These include all remaining costs from electric industry restructuring, including power purchase agreements, Maine Yankee, and other costs.

### Public Policy Charge

This recovers costs of programs required by state policy, including the net energy billing program, low income assistance programs, and more recent long-term power purchase agreements.

### Conservation

Efficiency Maine Trust was created by the Legislature to deliver energy efficiency programs and services. It is funded in part by Conservation, a fee on electricity use.

## Time of Use Information

### Weekday Time Periods

**On Peak Time**

7 a.m. - 12 p.m.

4 p.m. - 8 p.m.

**Shoulder Time**

12 p.m. - 4 p.m.

**Off Peak Time**

8 p.m. - 7 a.m.

---

### Weekend & Holiday Time Periods

**Shoulder Time**

7 a.m. - 8 p.m.

**Off Peak Time**

8 p.m. - 7 a.m.

## Your Supply Service

Your electricity is provided by suppliers licensed by the Maine Public Utilities Commission for electric energy and capacity. Customers can choose their supplier. For information on available electricity suppliers, selecting a supplier, or current rates, visit [www.maine.gov/meopa](http://www.maine.gov/meopa)

The Maine Public Utilities Commission administers competitive billing for Standard Offer Electricity Supply. Learn more by visiting [www.maine.gov/meopa](http://www.maine.gov/meopa)

### Standard Offer electricity supply is provided as follows:

#### Small Class

Constellation Energy Commodities Group Maine LLC 75%  
New Brunswick Energy Marketing Corporation 25%

#### Medium Class

NextEra Energy Marketing LLC 100%

#### Large Class

Maine Power LLC 100%

## Contact Information

Account #: 0000000010181348-7

Have questions? Need to report an outage?  
Change of address? Our contact center is open from Mon - Fri: 7:30 am - 5:00 pm.



#### Phone

Local: (207)-973-2000

Toll Free: 1-(855)-363-7211

Dig Safe: 8-1-1



#### Online

<https://www.versantpower.com/contact>

Or [info@versantpower.com](mailto:info@versantpower.com)



#### Mail

PO Box 932

Bangor, ME 04402-0932

## Consumer Assistance

### Need to Appeal?

The CASD investigates complaints, determines corrective action, educates the public and ensures utilities remain in compliance with State statutes and Commission rules.

Maine Public Utilities Commission, Consumer Assistance & Safety Division (CASD):

1-800-452-4699.

Or visit [www.maine.gov/mpuc](http://www.maine.gov/mpuc)

### Need Help Understanding your Bill?

Visit us online:

<https://www.versantpower.com/accounts-services/understanding-your-bill>