





SERVICE ADDRESS		ACCOUNT NUMBER		DUE DATE
ROSALIE G WINN 2027 E 25TH AVE DENVER, CO 80205-5616		53-0011563913-0		08/01/2025
		STATEMENT NUMBER	STATEMENT DATE	CREDIT AMOUNT
		935780167	07/14/2025	<b>-\$33.79 CR</b>

SERVICE ADDRESS: 2027 E 25TH AVE DENVER, CO 80205-5616  
NEXT READ DATE: 08/14/25

**ELECTRICITY SERVICE DETAILS (See back of your bill for explanation of billing terms)**

PREMISES NUMBER: 301037289  
INVOICE NUMBER: 1198851643

**METER READING INFORMATION**

METER 353252473			
Read Dates: 06/11/25 - 07/13/25 (32 Days)			
DESCRIPTION	CURRENT READING	PREVIOUS READING	USAGE
Mid Pk Energy	64 Actual	0 Actual	64 kWh
On-Peak Energy	149 Actual	0 Actual	149 kWh
Off-Peak Energy	846 Actual	0 Actual	846 kWh
Total Energy	1060 Actual	0 Actual	1060 kWh

**ELECTRICITY CHARGES**

**RATE: RETOU Res Energy TOU**

DESCRIPTION	USAGE UNITS	RATE	CHARGE
Service & Facility			\$7.10
RETOU On-Peak	149 kWh	\$0.209150	\$31.16
RETOU Mid Pk/Shoulder	64 kWh	\$0.143320	\$9.17
RETOU Off-Peak	846 kWh	\$0.077490	\$65.56
RDA	846 kWh	-\$0.001880	-\$1.59 CR
Trans Cost Adj	105.89	8.30%	\$8.79
ECA Q2	62.87	33.87%	\$21.30
ECA Q3	43.02	30.60%	\$13.16
Demand Side Mgmt	105.89	10.11%	\$10.71
PurchCapCostAdj	105.89	3.62%	\$3.83
Trans Elec Plan	105.89	1.29%	\$1.37
Renew. Energy Std Adj			\$1.69
Colo Energy Plan Adj			\$1.69
Clean Energy Plan Rev			\$2.14
Energy Assistance Chg			\$0.81
<b>Subtotal</b>			<b>\$176.89</b>
Franchise Fee		3.00%	\$5.28
Sales Tax			\$9.34
<b>Total</b>			<b>\$191.51</b>

**BE PREPARED FOR SEVERE WEATHER.**

While storms are unpredictable, you can take a few easy steps to make sure you stay updated if an outage occurs. Find our outage checklist and bookmark our electric outage map or download our mobile app for outage updates.

For more tips about what to do in an outage or how to prepare visit [xcelenergy.com/Outage](http://xcelenergy.com/Outage).

**TOGETHER WE POWER STABILITY.**

Energy Outreach Colorado is a nonprofit partnering with Xcel Energy to provide energy bill payment assistance and energy-efficiency upgrades for affordable housing and nonprofit facilities. We need your help today! There are three ways to contribute:



1. Visit the Energy Outreach Colorado website at [www.energyoutreach.org](http://www.energyoutreach.org) to make a one-time donation.

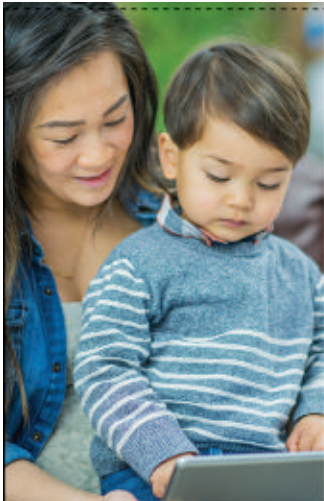
2. **CHECK THE RED BOX** on the front-left side of this payment stub AND select a tax-deductible contribution below.

**MONTHLY DONATION:**

**\$20** \_\_\_\_\_ **\$10** \_\_\_\_\_ **\$5** \_\_\_\_\_ **Other** \_\_\_\_\_

3. Make a one-time, tax-deductible contribution of \$ \_\_\_\_\_  
Enclose this form with your Xcel Energy payment. Or, mail to:  
**ATTN PAR Dept., PO BOX 8, EAU CLAIRE, WI 54702-0008**  
(Please make your check payable to Energy Outreach Colorado.)

Customers that choose to donate will have account information securely shared with Energy Outreach Colorado for tax purposes only.





SERVICE ADDRESS	ACCOUNT NUMBER	DUE DATE	
ROSALIE G WINN 2027 E 25TH AVE DENVER, CO 80205-5616	53-0011563913-0	08/01/2025	
	STATEMENT NUMBER	STATEMENT DATE	CREDIT AMOUNT
	935780167	07/14/2025	<b>-\$33.79 CR</b>

SERVICE ADDRESS: 2027 E 25TH AVE DENVER, CO 80205-5616  
 NEXT READ DATE: 08/14/25

**NATURAL GAS SERVICE DETAILS (See back of your bill for explanation of billing terms)**

PREMISES NUMBER: 301037289  
 INVOICE NUMBER: 0563365127

METER READING INFORMATION			
<b>METER 20035652</b>		Read Dates: 06/12/25 - 07/14/25 (32 Days)	
DESCRIPTION	CURRENT READING	PREVIOUS READING	USAGE
Total Energy	7355 Actual	7342 Actual	13 ccf

**NATURAL GAS ADJUSTMENTS**

DESCRIPTION	VALUE UNITS	CONVERSION	VALUE UNITS
Therm Multiplier	13 ccf	x 0.871698	<b>11 therms</b>

**NATURAL GAS CHARGES RATE: RG Residential**

DESCRIPTION	USAGE UNITS	RATE	CHARGE
Service & Facility			\$11.00
Usage Charge	11 therms	\$0.317170	\$3.49
Interstate Pipeline	11 therms	\$0.057400	\$0.63
Natural Gas Q2	6.45 therms	\$0.394100	\$2.54
Natural Gas Q3	4.55 therms	\$0.369600	\$1.68
Demand Side Mgmt			\$1.60
GRSA			\$0.80
Energy Assistance Chg			\$0.81
<b>Subtotal</b>			<b>\$22.55</b>
Franchise Fee		3.00%	\$0.66
Sales Tax			\$1.16
<b>Total</b>			<b>\$24.37</b>

**OTHER RECURRING CHARGES DETAILS**

DESCRIPTION	CHARGE
Solar* Rewards Community Solar	
Production Credit	
Solar Production Period	June 2025
SRC075012 Production Credit	1570.07 kWh x -0.085360
<b>Total</b>	<b>-\$134.02 CR</b>
	<b>-\$134.02 CR</b>



**STAY SAFE. CALL 811 BEFORE YOU DIG.**

Whether it's a major project or just some gardening, be sure to call 811 before any digging. It's smart. It's easy. And it helps keep everyone safe.

For more information visit [xcelenergy.com/Safety](http://xcelenergy.com/Safety).



008313 2/2



07/14/2025

53-0011563913-0

## IMPORTANT PHONE NUMBERS (Available 24 hours, 7 days a week)

Electric Emergencies: **800-895-1999** Natural Gas Emergencies: **800-895-2999** Call Before You Dig: **811** Telecommunications Relay Service (TRS): **711**

### CONVENIENT WAYS TO PAY YOUR BILL

Standard Payment Options (no fees apply):

- **My Account:** View and pay your bill using our mobile app, see your energy use and access your account information.
- **Auto Pay:** Automatically pay your bill directly from your bank account.
- **Pay Online:** View and pay your bill online using MyCheckFree.
- **Pay by Phone:** Make your payment from your checking or savings account with a phone call to **800-895-4999**.

#### Colorado Energy Plan Adjustment

**(Colo Energy Plan Adj):** funds voluntary early retirement for Xcel Energy's coal-fired power plants as part of our plan to cut carbon emissions by 2030 and provide net-zero energy by 2050.

**Demand Charge:** recovers costs to produce and deliver power to you, including the costs of poles and wires, transmission and distribution facilities in the power grid.

**Demand Peak Day Quantity (Demand PDQ):** this charge is for large commercial and industrial customers only. It's a measurement of their highest daily use of electricity during a monthly billing cycle.

**Demand-Side Management Cost Adjustment (Demand Side Mgmt):** recovers costs of energy efficiency and conservation programs that encourage customers to reduce their energy use. If you receive electricity and natural gas from us you will see two charges.

**Energy Assistance Charge: Required by House Bill 21-1105, we collect and remit this monthly charge to Energy Outreach Colorado for bill assistance for income-qualified customers. If you receive electricity and natural gas from us you will see two charges. If you're struggling to pay your utility bills, you might qualify for exemption from a monthly charge related to energy assistance and be eligible for utility bill payment assistance. Please call 1-866-HEAT-HELP to see if you qualify. You may request to opt out of this charge by calling 800-895-4999.**

**Si tiene dificultades para pagar sus facturas de energía, es posible que reúna los requisitos para recibir asistencia para pagar sus facturas y que sea elegible para la exención del cargo por asistencia energética. Llame al 1-866-HEAT-HELP (1-866-432-8435) para ver si califica para recibir asistencia.**

**Electric Commodity Adjustment (ECA):** recovers the cost of fuel used to generate the electricity you use. We pass on the wholesale cost to customers without a markup. Costs are adjusted on a quarterly basis to reflect market conditions.

**Energy Charge:** the variable costs of producing energy not collected through quarterly commodity adjustments.

**Franchise Fee:** this surcharge pays cities and counties for the right to use public streets to provide utility services. We collect the surcharges and pass them to your city and county.

- **Pay by Mail:** Return the enclosed pre-addressed envelope to **Xcel Energy, PO Box 660553, Dallas, TX 75266-0553**. Include the attached bill stub for faster processing along with your payment. Apply proper postage.

**Electronic Check Conversion:** When you provide a check as payment, you authorize us either to use information from your check to make a one-time electronic fund transfer from your account or to process the payment as a check transaction.

#### Other Payment Options

Third-Party processing fees will apply. Xcel Energy does not collect or benefit from these fees:

- **Credit/Debit Card Payment:** To pay with your card, use **MyAccount** or **eBill** or call **833-660-1365**.
- **Pay Stations:** Visit **xcelenergy.com** to find an in-person location near you.

### GLOSSARY

**Gas Cost Adjustment (Gas Cost Adj or Natural Gas):** recovers the cost of natural gas purchased and delivered to you, including natural gas fuel, upstream transportation and storage services. We pass on the wholesale cost to customers without a markup. Costs are adjusted on a quarterly basis to reflect market conditions.

**General Rates:** your base rate charge, which includes the Service and Facility Charge, metering charges, a Demand Charge (if applicable), plus either an Energy Charge for electric service or the Usage Charge for gas service, as applicable.

**General Rate Schedule Adjustments (GRSA):** a percentage amount of your bill calculated for base rate charges, excluding the Service and Facility Charge for gas customers, the Energy or Usage Charge and the Demand or Capacity Charge. The adjustment can be positive or negative and is applied to your electric and/or natural gas bill.

**Interstate Pipeline:** reflects Xcel Energy's payments to interstate pipelines and storage facility operators to deliver natural gas into Xcel Energy's gas system. The Federal Energy Regulatory Commission regulates these upstream services and the rates charged to Xcel Energy.

**Kilowatt Hour (kWh):** Measures the amount of electricity you use.

**Late Payment Charge:** we assess a late payment charge on any unpaid balance exceeding \$50.00. For residential customers, a late payment charge of 1% per month is applied. For commercial customers, a 1.5% late payment charge will be assessed.

**Load Meter Charge:** a flat monthly charge for those with customer-owned generation in parallel with Xcel Energy's system. This fee is for the cost of the meter needed for these accounts.

**Natural Gas:** reflects our cost to purchase natural gas fuel at market prices as approved by the Colorado Public Utilities Commission.

**Production Meter Charge:** a flat monthly charge for customers who have on-site power generation, like rooftop solar, and are connected to Xcel Energy's system. This fee is for the cost of the meter needed for these accounts.

**Purchased Capacity Cost Adjustment (Purchased Cap Cost Adj):** the cost to purchase electric generation from other suppliers.

#### Renewable Energy Standard Adjustment

**(Renew Energy Std Adj):** a base rate charge which represents 1% of an electric bill and funds renewable energy programs as required by Colorado law under which utilities must generate or purchase increasing portions of their electricity from sun, wind or biomass.

**Revenue Decoupling Adjustment:** supports a program designed to encourage conservation without penalizing the energy provider for the reduction of electricity use. Adjusted quarterly, customers will either see a bill credit or a surcharge not to exceed 3% of your overall bill.

**Service & Facility Charge:** a flat monthly charge for the meter on your home, having the meter read, billing support and customer service needs.

**Time-of-Use Rates:** electricity use charges for customers on our time-differentiated pricing plan. Electricity pricing varies depending on when you use it. The On-Peak period is 3-7 p.m., weekdays except holidays; Mid-Peak is 1-3 p.m., weekdays except holidays; Off-Peak is all other hours.

**Therm:** Measures your natural gas use. One therm is equal to 100 cubic feet of natural gas. A dekatherm is 10 therms.

**Therm Multiplier:** natural gas usage is measured in therms. This is the conversion from the volume of natural gas (cubic feet) to energy use (therms).

**Transmission Cost Adjustment (Trans Cost Adj):** recovers transmission investments for infrastructure to carry electricity from a power plant to your home and business that results in a net increase in transmission capacity or are part of an approved Wildfire Mitigation Plan. Also recovers distribution costs pursuant to Colorado Senate Bill 24-218.

**Transportation Electrification Plan Adjustment (Trans Elec Plan):** funds programs to help customers unlock the benefits of electric transportation.

**Usage Charge:** this charge covers the costs for providing natural gas service, including moving natural gas through pipelines and storage to your home or business, that are not recovered through other charges.

### RESOURCES TO BETTER UNDERSTAND YOUR BILL

Find more information online about ways to pay and manage your bill, how to read your bill, energy assistance programs and more. Bills are even easier online. Go paperless. Download our Mobile App to manage your bill with ease and when you're on the go. Available now in the Apple Store and in Google Play.

**Billing summary note:** depending on the date your bill was calculated, you may see a line item included twice, showing different quarterly adjustments.

