



**Details of your Electric Charges**

Residential Service - service number 0550 0470 3983 7000 9873 05  
 Electricity you used this period

<u>Meter Number</u>	<u>Energy Type</u>	<u>End Date</u>	<u>Start Date</u>	<u>Number Of Days</u>	<u>Total Use</u>
NXA107848843	Use (kWh)	Jul 15 <u>Reading</u> 153242	Jun 14 <u>Reading</u> 152142	32 <u>Multiplier</u> 1	1100

Your meter records electric energy use in hourly intervals. Your bill is the total of all hourly intervals recorded during your billing period.  
 End and start date kWh meter readings are provided for informational purposes only.  
 Please visit My Account at delmarva.com to view your energy use data.

<b>Electric Summary</b>	
<b>Balance from your last bill</b>	<b>\$128.37</b>
Payment Jul 02	\$128.37-
<b>Total Payments</b>	<b>\$128.37-</b>
Electric Charges (Residential Service)	\$215.64
<b>New electric charges</b>	<b>\$215.64</b>
<b>Total amount due by Aug 6, 2025</b>	<b>\$215.64</b>

**Your next bill period is scheduled to end on August 14, 2025**

**Peak Energy Savings Credit:** No Peak Savings Days were called during this billing period.

**Delivery Charges:** These charges reflect the cost of bringing electricity to you. Current charges for 32 days, **summer rates in effect.**

<u>Type of charge</u>	<u>How we calculate this charge</u>	<u>Amount(\$)</u>
Customer Charge		13.50
Distribution Charge	First 500 kWh X \$0.0465940 per kWh	23.30
Distribution Charge	Last 600 kWh X \$0.0465940 per kWh	27.96
Low Income Charge	1100 kWh X \$0.0000950 per kWh	0.10
Green Energy Fund	1100 kWh X \$0.0003560 per kWh	0.39
Renewable Compliance Charge:		
Wind & Solar	1100 kWh X \$0.0057950 per kWh	6.37
Qualified Fuel Cells	1100 kWh X \$0.0036160 per kWh	3.97
Distribution System Improvement Charge	at 5.32%	3.45
Energy Efficiency Surcharge	1100 kWh X \$0.0004760 per kWh	0.52
<b>Total Electric Delivery Charges</b>		<b>79.56</b>

Electronic Check Conversion

When you provide a check as payment, you authorize us either to use information from your check to make a one-time electronic fund transfer from your account or to process the payment as a check transaction.

**JEROME T ADAMS**  
**Account number: 5500 4703 983**

Your electric and gas bill for the period  
**June 14, 2025 to July 15, 2025**

Both the "Wind & Solar" and "Qualified Fuel Cell" portions of the Renewable Compliance Charge above provide compliance required by Delaware's Renewable Energy Portfolio Standards Act. The Qualified Fuel Cells provide customers with approximately 31% of that compliance annually. For more on renewable and clean energy, visit [delmarva.com/repsa](http://delmarva.com/repsa).

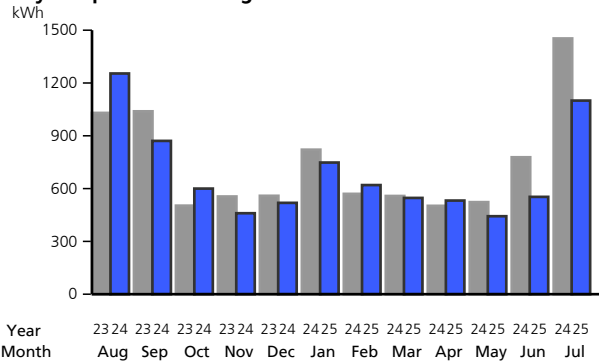
**Supply Charges:** These charges reflect the cost of producing electricity for you. You can compare this part of your bill to offers from competitive suppliers. The class average annual price to compare is 12.05 cents per kWh.

**Billing Period: Jun 14, 2025 to Jul 15, 2025 (32 days)**

Type of charge	How we calculate this charge	Amount(\$)
Transmission Capacity Charge	5.31 kW X \$6.2427920 per kW	33.15
Standard Offer Service Charge	First 500 kWh X \$0.0935690 per kWh	46.79
Standard Offer Service Charge	Last 600 kWh X \$0.0935690 per kWh	56.14
<b>Total Electric Supply Charges</b>		<b>136.08</b>
<b>Total Electric Charges - Residential Service</b>		<b>215.64</b>

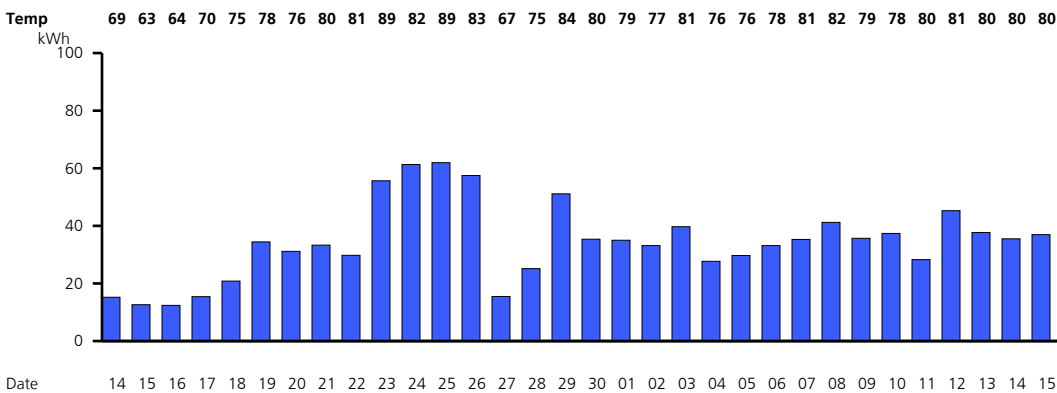
**Your monthly Electricity use in kWh**

Daily temperature averages: Jul 2024: 79° F Jul 2025: 78° F



Your daily electricity use for this bill period. Visit My Account at [delmarva.com](http://delmarva.com) to see your hourly electricity use.

Meter Number NXA107848843



**Details of your Gas Charges**

Residential Gas Space Heating - service number 0550 0470 3983 7000 9873 26  
 Gas you used this period

<b>Gas Summary</b>	
<b>Balance from your last bill</b>	<b>\$65.93</b>
Payment Jul 02	\$65.93-
Continued on next page	

**JEROME T ADAMS**  
**Account number: 5500 4703 983**

Your electric and gas bill for the period  
**June 14, 2025 to July 15, 2025**

Meter Number Energy Type	Current Reading	Previous Reading	Difference	Multiplier	Total Use
X17456194AGM Use (CCF)	Jul 15 007294 (actual)	Jun 14 007278 (actual)	16	1	16

<b>Gas Summary Continued</b>	
<b>Total Payments</b>	<b>\$65.93-</b>
Gas Charges (Residential Gas Space Heating)	\$37.23
<b>New gas charges</b>	<b>\$37.23</b>
<b>Total amount due by Aug 6, 2025</b>	<b>\$37.23</b>

Your next meter reading is scheduled for August 14, 2025

**Delivery Charges:** These charges reflect the cost of bringing gas service to you.  
 Current charges for 32 days, **summer rates in effect.**

Type of charge	How we calculate this charge	Amount(\$)
Customer Charge		18.07
Distribution Charge	16 CCF X \$0.7265700 per CCF	11.63
Distribution System Improvement Charge	at 0.03%	0.01
<b>Total Gas Delivery Charges</b>		<b>29.71</b>

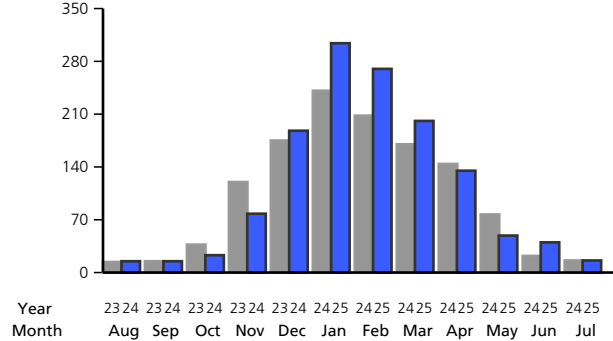
**Supply Charges:** These charges reflect the cost of producing gas service for you.

**Billing Period: Jun 14, 2025 to Jul 15, 2025 (32 days)**

Type of charge	How we calculate this charge	Amount(\$)
Gas Cost Charge	16 CCF X \$0.4699000 per CCF	7.52
<b>Total Gas Supply Charges</b>		<b>7.52</b>
<b>Total Gas Charges - Residential Gas Space Heating</b>		<b>37.23</b>

*Your monthly Gas use in CCF*

**Daily temperature averages:** Jul 2024: 79° F Jul 2025: 78° F

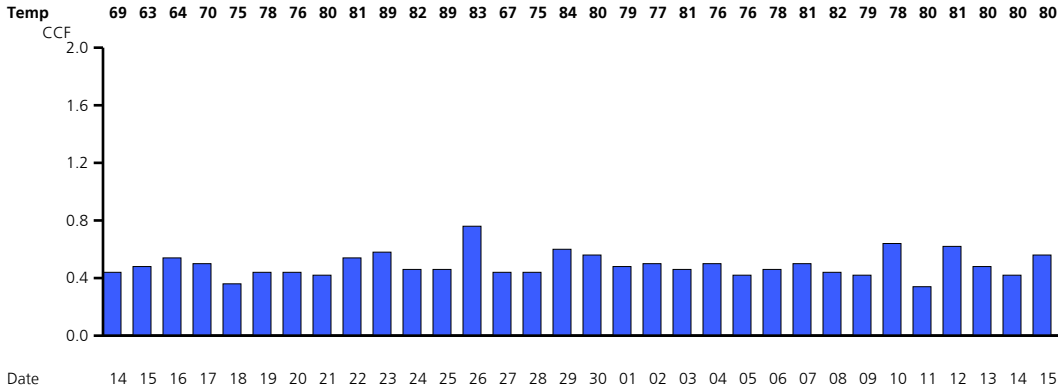


**JEROME T ADAMS**  
**Account number: 5500 4703 983**

Your electric and gas bill for the period  
**June 14, 2025 to July 15, 2025**

Your daily gas use for this bill period. Visit My Account at delmarva.com to see your hourly gas use.

Meter Number X17456194AGM



Find helpful storm preparation and power outage information at delmarva.com

You can access the Delmarva Power Delaware electric and/or gas tariffs at delmarva.com/tariffs.

Learn how to save energy and money by registering for MyAccount at www.delmarva.com.

Your smart meter is read wirelessly. Visit My Account at delmarva.com to view your daily and hourly energy usage.

Effective July 1, 2025, the Distribution System Improvement Charge (DSIC) was adjusted from 4.23% to 5.32% of distribution and customer charge for electric customers and adjusted from 0.00% to 0.03% of distribution and customer charge for gas customers. It is subject to a review and approval process by the Delaware Public Service Commission and adjusted periodically.

You can help a Delmarva customer in need of assistance with their energy bills by contributing to the Good Neighbor Energy Fund. Simply pay exactly \$1.00 over your Delmarva bill amount and that dollar will be contributed to the Good Neighbor Energy Fund administered by a 501(c)3 non-profit organization in your community. Contributions must be exactly \$1.00 over the billed amount; amounts over \$1.00 will result in a credit to your account. Delmarva Power will also contribute \$1.00 to the fund for every \$3.00 in customer donations, up to \$70,000.