

Details of your Electric Charges

Residential Service - service number 0550 0576 7490 7000 6288 14
 Electricity you used this period

<u>Meter Number</u>	<u>Energy Type</u>	<u>End Date</u>	<u>Start Date</u>	<u>Number Of Days</u>	<u>Total Use</u>
NXA104218881	Use (kWh)	Sep 16 Reading 201678	Aug 16 Reading 201099	32 Multiplier 1	579

Your meter records electric energy use in hourly intervals. Your bill is the total of all hourly intervals recorded during your billing period.
 End and start date kWh meter readings are provided for informational purposes only.
 Please visit My Account at delmarva.com to view your energy use data.

Your next bill period is scheduled to end on October 15, 2025

Peak Energy Savings Credit: No Peak Savings Days were called during this billing period.

Delivery Charges: These charges reflect the cost of bringing electricity to you. Current charges for 32 days, **summer rates in effect.**

<u>Type of charge</u>	<u>How we calculate this charge</u>	<u>Amount(\$)</u>
Customer Charge		13.50
Distribution Charge	First 500 kWh X \$0.0465940 per kWh	23.30
Distribution Charge	Last 79 kWh X \$0.0465940 per kWh	3.68
Low Income Charge	579 kWh X \$0.0000950 per kWh	0.06
Green Energy Fund	579 kWh X \$0.0003560 per kWh	0.21
Renewable Compliance Charge:		
Wind & Solar	579 kWh X \$0.0057950 per kWh	3.36
Qualified Fuel Cells	579 kWh X \$0.0031240 per kWh	1.81
Distribution System Improvement Charge	at 5.32%	2.15
Energy Efficiency Surcharge	579 kWh X \$0.0004760 per kWh	0.28
Total Electric Delivery Charges		48.35

Check here to enroll in the Direct Debit plan Sign and date here _____

By signing here, you authorize Delmarva Power to electronically deduct the amount of your monthly bill from your checking account each month. The check you send with this signed authorization will be used to set up Direct Debit. You understand that we will notify you each month of the date and amount of the debit, which will be on or after the due date stated on your monthly bill. You understand that to withdraw this authorization you must call Delmarva Power. You understand that Delmarva Power does not charge for this service, but that your bank may have charges for this service.

Electronic Check Conversion

When you provide a check as payment, you authorize us either to use information from your check to make a one-time electronic fund transfer from your account or to process the payment as a check transaction.

KENNETH G KIRK
Account number: 5500 5767 490

Your electric bill for the period
August 16, 2025 to September 16, 2025

Both the "Wind & Solar" and "Qualified Fuel Cell" portions of the Renewable Compliance Charge above provide compliance required by Delaware's Renewable Energy Portfolio Standards Act. The Qualified Fuel Cells provide customers with approximately 31% of that compliance annually. For more on renewable and clean energy, visit delmarva.com/repsa.

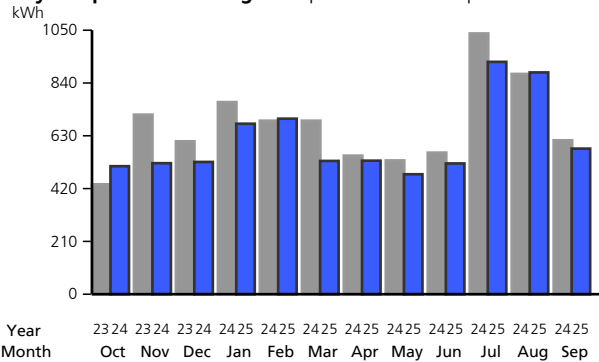
Supply Charges: These charges reflect the cost of producing electricity for you. You can compare this part of your bill to offers from competitive suppliers. The class average annual price to compare is 11.84 cents per kWh.

Billing Period: Aug 16, 2025 to Sep 16, 2025 (32 days)

<u>Type of charge</u>	<u>How we calculate this charge</u>	<u>Amount(\$)</u>
Transmission Capacity Charge	3.34 kW X \$6.0149701 per kW	20.09
Standard Offer Service Charge	First 500 kWh X \$0.0935690 per kWh	46.79
Standard Offer Service Charge	Last 79 kWh X \$0.0935690 per kWh	7.39
Total Electric Supply Charges		74.27
Total Electric Charges - Residential Service		122.62

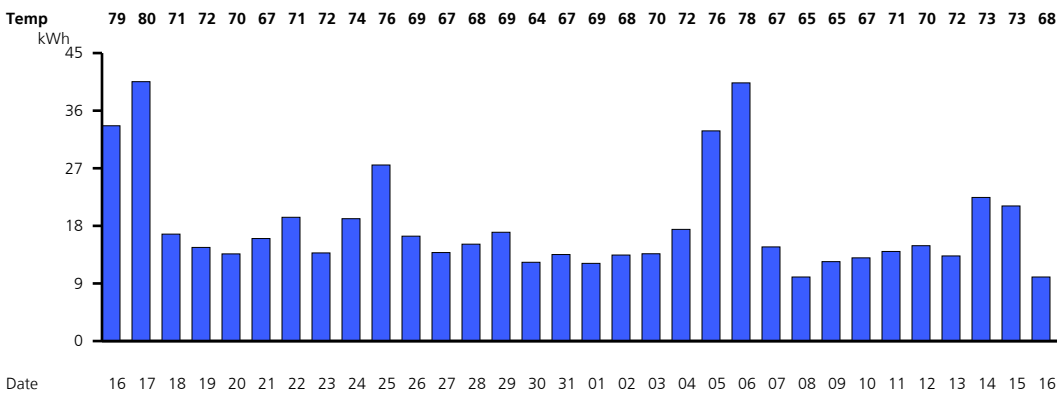
Your monthly Electricity use in kWh

Daily temperature averages: Sep 2024: 70° F Sep 2025: 71° F



Your daily electricity use for this bill period. Visit My Account at delmarva.com to see your hourly electricity use.

Meter Number NXA104218881



Find helpful storm preparation and power outage information at delmarva.com
 You can access the Delmarva Power Delaware electric and/or gas tariffs at delmarva.com/tariffs.
 Learn how to save energy and money by registering for MyAccount at www.delmarva.com.

KENNETH G KIRK
Account number: 5500 5767 490

Your electric bill for the period
August 16, 2025 to September 16, 2025

Your smart meter is read wirelessly. Visit My Account at delmarva.com to view your daily and hourly energy usage.

Effective September 1, 2025, the average residential customer will see a monthly bill decrease of \$1.34 due to a decrease in the Transmission Service Charge. This charge covers the cost associated with moving electricity from power plants over high-voltage lines and towers to the distribution system.

You can help a Delmarva customer in need of assistance with their energy bills by contributing to the Good Neighbor Energy Fund. Simply pay exactly \$1.00 over your Delmarva bill amount and that dollar will be contributed to the Good Neighbor Energy Fund administered by a 501(c)3 non-profit organization in your community. Contributions must be exactly \$1.00 over the billed amount; amounts over \$1.00 will result in a credit to your account. Delmarva Power will also contribute \$1.00 to the fund for every \$3.00 in customer donations, up to \$70,000.