



Bill Date: September 23, 2025
Account #: 000000000122507-3
Invoice #: 19328382
Read Cycle: 64

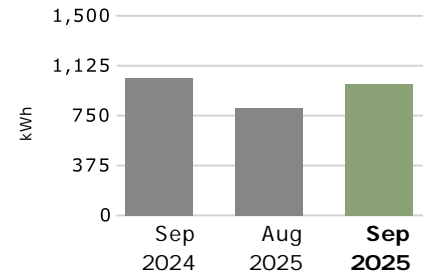
JOHN W MICHAUD
676 MAIN ST
SAINT AGATHA

Billing Summary

Service Period: Aug 19, 2025 - Sep 19, 2025	
Previous Balance	\$24.88
Payment Made	-\$24.88
Remaining Balance	\$0.00
<hr/>	
New Charges (see page 2)	\$24.88
<hr/>	
Total Current Charges	\$24.88
<hr/>	
Total Amount Due By Oct 20, 2025	\$24.88

Your Energy Insight

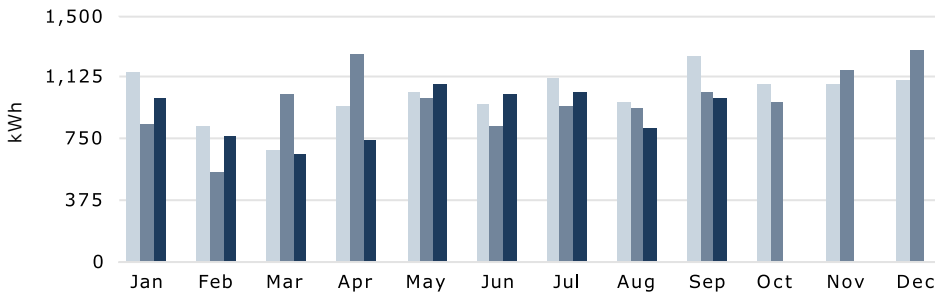
This month your usage **decreased 4%** compared to the same time as last year.



Total Monthly kWh	1,031	810	991
Avg Daily kWh	31	28	32
Avg Daily Cost	\$2.31	\$0.86	\$0.80
Service Days	33	29	31

Monthly Energy kWh Usage

2023 2024 2025



Grid and Climate Planning

Your bill this month includes an insert with information about our Grid and Climate Planning efforts. To learn more about our climate goals, visit versantpower.com/grid-climate-planning.

VB_20250923_170008_3512_3988.xml



Additional Ways To Pay

By Phone Call (207) 973-2000 for payment by debit or credit card.	Online Pay by credit/debit or set up autopay online: versantpower.com/my-account
---	--

There may be a fee for certain transactions.

Make check payable to: Versant Power
Do not mail cash

JOHN W MICHAUD
PO BOX 25
SAINT AGATHA ME 04772-0025

Account #: 000000000122507-3
Payment Due By: Oct 20, 2025


Total Due: \$24.88


Payment Amount \$

VERSANT POWER
PO BOX 16044
LEWISTON ME 04243-9527
[Barcode]

000000000122507 000002488 3

New Charges

Maine Public District (Rate AH Home Heating Eco)			
	Versant Delivery	kWh	Price
	Distribution	Minimum Charge	\$11.70
	Public Policy Charge		\$13.18
	Versant Delivery Subtotal		\$24.88

Standard Offer Service	
	Supply Service
	Supplier Subtotal
	\$0.00

Versant Delivery + Supplier Charges = \$24.88

Meter Read

Meter#: 8067718

Service Period: Aug 19, 2025 - Sep 19, 2025

Current Reading	Previous Reading
23879	- 22888
Total kWh: 31 Day(s) 991	

Net Energy Credits

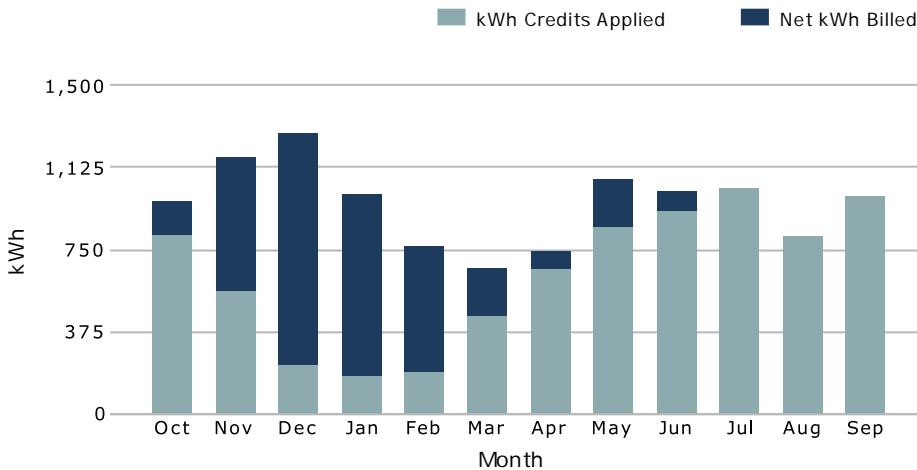
kWh Consumed 991 kWh
Applied kWh Credits -991 kWh

Net kWh Billed 0 kWh

991 kWh Applied

Monthly Net Energy kWh Credit Details

Net Energy kWh Credits Compared to kWh Use



Supplier Message

Standard Offer

Your electricity price for Standard Offer service for the period of January 1, 2025 through December 31, 2025 is \$0.116530 per kWh.

About Your Energy Supply
You're on Standard Offer. Did you know you can choose your Energy Supplier? Versant Power does not supply energy, but provides billing & payment services on behalf of your electricity supplier.

Billing Terminology

For further definitions on your energy bill terms, please visit us online at:

<https://www.versantpower.com/accounts-services/understanding-your-bill>

kWh (kilowatt hour)

The amount of electricity you use is measured in kilowatt hours (kWh) by a meter. For example, a 100-watt light bulb used for 10 hours will consume 1,000 Watt hours, or one kWh.

Estimated Bill

If we are unable to obtain a scheduled meter reading, your bill will be estimated based on the amount of kWh consumed based on past usage.

Sales Tax Exceptions

Maine state sales tax does not apply for the first 750 kilowatt hours (kWh) of residential usage.

Late Payment

The amount not paid by the Due Date on the bill will be subject to a late payment fee of 0.949% on the unpaid balance.

Payment Arrangement

If you have trouble paying your bill, a payment arrangement may help. Please call customer service for more information.

Delivery Rates

Maine's rates are approved by the Maine Public Utilities Commission. Copies of our rate schedules are available online at [versantpower.com](https://www.versantpower.com).

Distribution

This recovers the costs of the local system - including poles, wires, and substations - used for delivery of power from the bulk grid system to your home or business.

Transmission

This recovers the costs of the high-voltage system that transports bulk power.

Stranded Costs - Volumetric

These include all remaining costs from electric industry restructuring in 2000, including power purchase agreements, Maine Yankee, and other costs. For some non-residential customers, these also include the variable component of the public policy charge.

Public Policy Charge - Fixed

This is a fixed charge that recovers certain costs of programs required by state policy, including the net energy billing program, low-income assistance programs, and more recent long-term power purchase agreements.

Conservation

Efficiency Maine Trust was created by the Legislature to deliver energy efficiency programs and services. It is funded in part by Conservation, a fee on electricity use.

Net Energy Billing Credits

kWh

Opening Credit Balance	337.95
Credits Received	940.47
Credits Applied this Period	-991
Credits Expired	0
Net Change in Credits	-50.53
Closing Credit Balance (as of Sep 23, 2025)	287.42

Net Energy Billing Terminology

Net Energy Billing

Net Energy Billing credits are earned when a renewable energy source, such as wind or solar, produces excess electricity that was not used at the time of generation. Credits can be in units of kilowatt-hours or in dollars, depending on the net energy billing program.

Credits Generated

Generated credits are the total amount of credits earned from your own excess renewable energy generation, such as solar panels on your roof, during this billing period.

Credits Distributed

Distributed credits are credits that have been allocated to a customer account based on the contract agreement. These could be distributed from a community solar program or from an individual's renewable energy system.

Credits Received

Received credits are new credits that are made available on your account during the current billing period. These could have been distributed from a renewable energy generator to you or could be from your own renewable generation.

Credits Applied this Period

This refers to the amount of credits applied to the bill during a specific billing period.

Credits Expired

Credits expire on a rolling basis twelve months after they are earned. Once a credit expires, it is no longer available to be applied to the bill.

Net Change in Credits

Your net change is the difference between incoming credits and outgoing, used, and expired credits for this billing period.

Credit Closing Balance

Refers to the amount of credits you have remaining in your bank and that are available to use.

Your Supply Service

Your electricity is provided by suppliers licensed by the Maine Public Utilities Commission for electric energy and capacity. Customers can choose their supplier. For information on available electricity suppliers, selecting a supplier, or current rates, visit www.maine.gov/meopa

The Maine Public Utilities Commission administers competitive billing for Standard Offer Electricity Supply. Learn more by visiting www.maine.gov/meopa

Standard Offer electricity supply is provided as follows:

Small Class

New Brunswick Energy Marketing Corp. 100%

Medium Class

New Brunswick Energy Marketing Corp. 100%

Large Class

New Brunswick Energy Marketing Corp. 100%

Contact Information

Account # : 0000000000122507-3

Have questions? Need to report an outage? Change of address? Our contact center is open from Mon - Fri: 7:30 am - 5:00 pm.



Phone

Local: (207)-973-2000

Toll Free: 1-(855)-363-7211

Dig Safe: 8-1-1



Online

<https://www.versantpower.com/contact>

Or info@versantpower.com



Mail

PO Box 932

Bangor, ME 04402-0932

Consumer Assistance

Need to Appeal?

The CASD investigates complaints, determines corrective action, educates the public and ensures utilities remain in compliance with State statutes and Commission rules.

Maine Public Utilities Commission, Consumer Assistance & Safety Division (CASD):

1-800-452-4699.

Or visit www.maine.gov/mpuc

Need Help Understanding your Bill?

Visit us online:

<https://www.versantpower.com/accounts-services/understanding-your-bill>