

Details of your Electric Charges

Residential Heating - service number 0550 0199 8784 7000 7790 08
 Electricity you used this period

<u>Meter Number</u>	<u>Energy Type</u>	<u>End Date</u>	<u>Start Date</u>	<u>Number Of Days</u>	<u>Total Use</u>
1ND343430961	Use (kWh)	Sep 23 <u>Reading</u> 113779	Aug 23 <u>Reading</u> 113028	32 <u>Multiplier</u> 1	751

Your meter records electric energy use in hourly intervals. Your bill is the total of all hourly intervals recorded during your billing period.
 End and start date kWh meter readings are provided for informational purposes only.
 Please visit My Account at delmarva.com to view your energy use data.

Electric Summary	
Balance from your last bill	\$200.97
Payment Sep 15	\$200.97-
Total Payments	\$200.97-
Electric Charges (Residential Heating)	\$149.39
New electric charges	\$149.39
Total amount due by Oct 15, 2025	\$149.39

Your next bill period is scheduled to end on October 22, 2025

Peak Energy Savings Credit: No Peak Savings Days were called during this billing period.

Delivery Charges: These charges reflect the cost of bringing electricity to you. Current charges for 32 days, **summer rates in effect.**

<u>Type of charge</u>	<u>How we calculate this charge</u>	<u>Amount(\$)</u>
Customer Charge		13.50
Distribution Charge	First 500 kWh X \$0.0436060 per kWh	21.80
Distribution Charge	Last 251 kWh X \$0.0436060 per kWh	10.95
Low Income Charge	751 kWh X \$0.0000950 per kWh	0.07
Green Energy Fund	751 kWh X \$0.0003560 per kWh	0.27
Renewable Compliance Charge:		
Wind & Solar	751 kWh X \$0.0057950 per kWh	4.35
Qualified Fuel Cells	751 kWh X \$0.0031240 per kWh	2.35
Distribution System Improvement Charge	at 5.32%	2.46
Energy Efficiency Surcharge	751 kWh X \$0.0004760 per kWh	0.36
Total Electric Delivery Charges		56.11

Check here to enroll in the Direct Debit plan Sign and date here _____

By signing here, you authorize Delmarva Power to electronically deduct the amount of your monthly bill from your checking account each month. The check you send with this signed authorization will be used to set up Direct Debit. You understand that we will notify you each month of the date and amount of the debit, which will be on or after the due date stated on your monthly bill. You understand that to withdraw this authorization you must call Delmarva Power. You understand that Delmarva Power does not charge for this service, but that your bank may have charges for this service.

Electronic Check Conversion

When you provide a check as payment, you authorize us either to use information from your check to make a one-time electronic fund transfer from your account or to process the payment as a check transaction.

MARK BALLINTYN
Account number: 5500 1998 784

Your electric and gas bill for the period
August 23, 2025 to September 23, 2025

Both the "Wind & Solar" and "Qualified Fuel Cell" portions of the Renewable Compliance Charge above provide compliance required by Delaware's Renewable Energy Portfolio Standards Act. The Qualified Fuel Cells provide customers with approximately 31% of that compliance annually. For more on renewable and clean energy, visit delmarva.com/repsa.

Supply Charges: These charges reflect the cost of producing electricity for you. You can compare this part of your bill to offers from competitive suppliers. The class average annual price to compare is 10.76 cents per kWh.

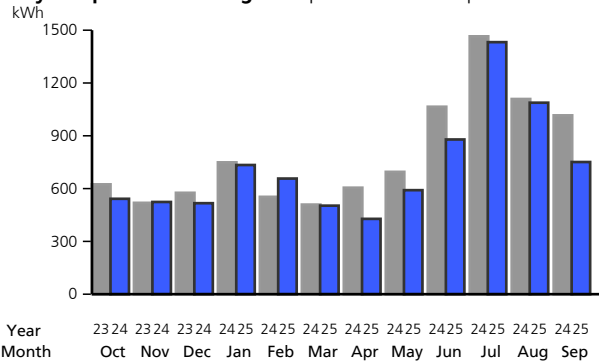
Billing Period: Aug 23, 2025 to Sep 23, 2025 (32 days)

<u>Type of charge</u>	<u>How we calculate this charge</u>	<u>Amount(\$)</u>
Transmission Capacity Charge	3.91 kW X \$5.9130435 per kW	23.12
Standard Offer Service Charge	First 500 kWh X \$0.0934040 per kWh	46.71
Standard Offer Service Charge	Last 251 kWh X \$0.0934040 per kWh	23.45
Total Electric Supply Charges		93.28

Total Electric Charges - Residential Heating 149.39

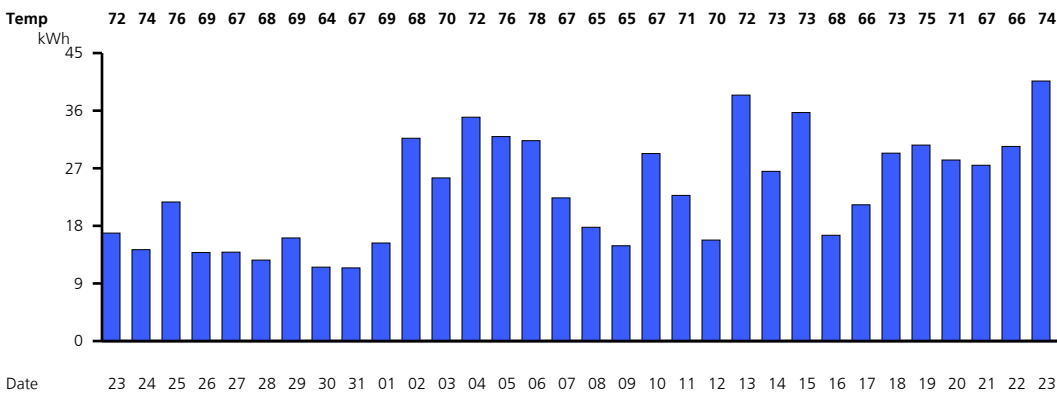
Your monthly Electricity use in kWh

Daily temperature averages: Sep 2024: 70° F Sep 2025: 70° F



Your daily electricity use for this bill period. Visit My Account at delmarva.com to see your hourly electricity use.

Meter Number 1ND343430961



Details of your Gas Charges

Residential Gas Space Heating - service number 0550 0199 8784 7000 7789 81
 Gas you used this period

Gas Summary	
Balance from your last bill	\$28.85
Payment Sep 15	\$28.85-
Continued on next page	

MARK BALLINTYN
Account number: 5500 1998 784

Your electric and gas bill for the period
August 23, 2025 to September 23, 2025

<u>Meter Number</u> <u>Energy Type</u>	<u>Current Reading</u>	<u>Previous Reading</u>	<u>Difference</u>	<u>Multiplier</u>	<u>Total Use</u>
X13116543AGM Use (CCF)	Sep 23 000037 (actual)	Aug 23 000028 (actual)	9	1	9

Gas Summary Continued	
Total Payments	\$28.85-
Gas Charges (Residential Gas Space Heating)	\$28.85
New gas charges	\$28.85
Total amount due by Oct 15, 2025	\$28.85

Your next meter reading is scheduled for **October 22, 2025**

Delivery Charges: These charges reflect the cost of bringing gas service to you.
 Current charges for 32 days, **summer rates in effect.**

<u>Type of charge</u>	<u>How we calculate this charge</u>	<u>Amount(\$)</u>
Customer Charge		18.07
Distribution Charge	9 CCF X \$0.7265700 per CCF	6.54
Distribution System Improvement Charge	at 0.03%	0.01
Total Gas Delivery Charges		24.62

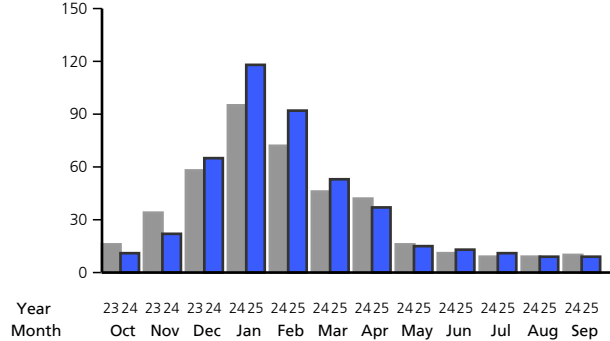
Supply Charges: These charges reflect the cost of producing gas service for you.

Billing Period: Aug 23, 2025 to Sep 23, 2025 (32 days)

<u>Type of charge</u>	<u>How we calculate this charge</u>	<u>Amount(\$)</u>
Gas Cost Charge	9 CCF X \$0.4699000 per CCF	4.23
Total Gas Supply Charges		4.23
Total Gas Charges - Residential Gas Space Heating		28.85

Your monthly Gas use in CCF

Daily temperature averages: Sep 2024: 70° F Sep 2025: 70° F

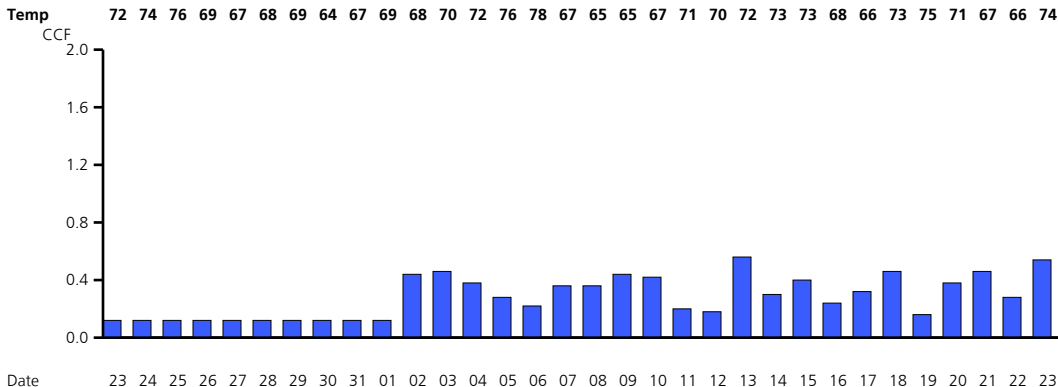


MARK BALLINTYN
Account number: 5500 1998 784

Your electric and gas bill for the period
August 23, 2025 to September 23, 2025

Your daily gas use for this bill period. Visit My Account at delmarva.com to see your hourly gas use.

Meter Number X13116543AGM



Find helpful storm preparation and power outage information at delmarva.com

You can access the Delmarva Power Delaware electric and/or gas tariffs at delmarva.com/tariffs.

Learn how to save energy and money by registering for MyAccount at www.delmarva.com.

Your smart meter is read wirelessly. Visit My Account at delmarva.com to view your daily and hourly energy usage.

Effective September 1, 2025, the average residential customer will see a monthly bill decrease of \$1.34 due to a decrease in the Transmission Service Charge. This charge covers the cost associated with moving electricity from power plants over high-voltage lines and towers to the distribution system.

You can help a Delmarva customer in need of assistance with their energy bills by contributing to the Good Neighbor Energy Fund. Simply pay exactly \$1.00 over your Delmarva bill amount and that dollar will be contributed to the Good Neighbor Energy Fund administered by a 501(c)3 non-profit organization in your community. Contributions must be exactly \$1.00 over the billed amount; amounts over \$1.00 will result in a credit to your account. Delmarva Power will also contribute \$1.00 to the fund for every \$3.00 in customer donations, up to \$70,000.